



5V
"ON"

5V
"OFF"

GND



GND

P1

EN1



GPIO1

EN2



GPIO2

ADGATE



GPIO3

ADDET



SDA

VOUT



SCL

3 VDC



CTRL

VRECT



INTB



GND

VOUT

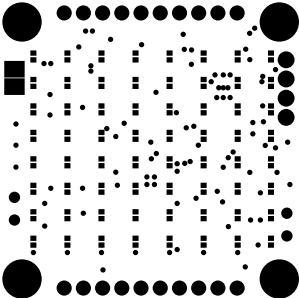


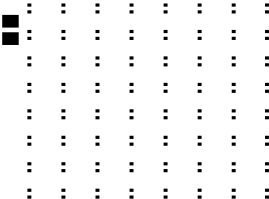
LED
"OFF"

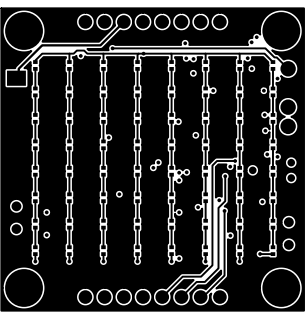


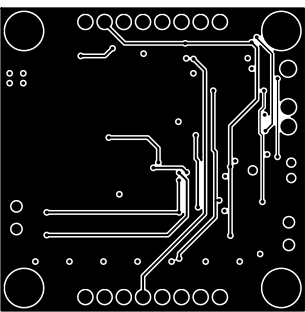
LED
"ON"

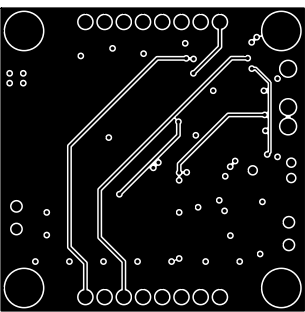


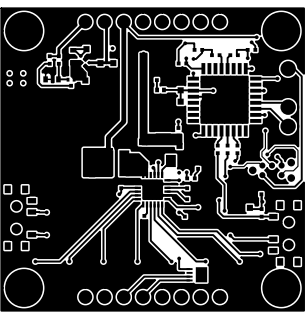


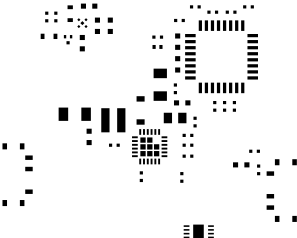


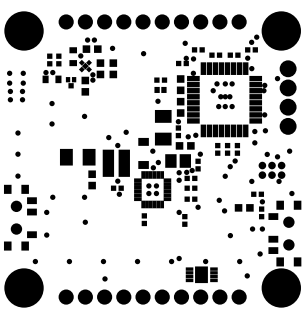


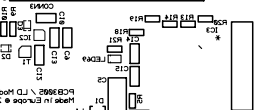




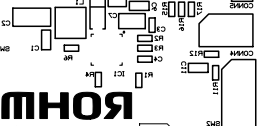








PCB3892 \ LD Module (A)
Made in Europe © 2016



ROHM
SEMICONDUCTOR



