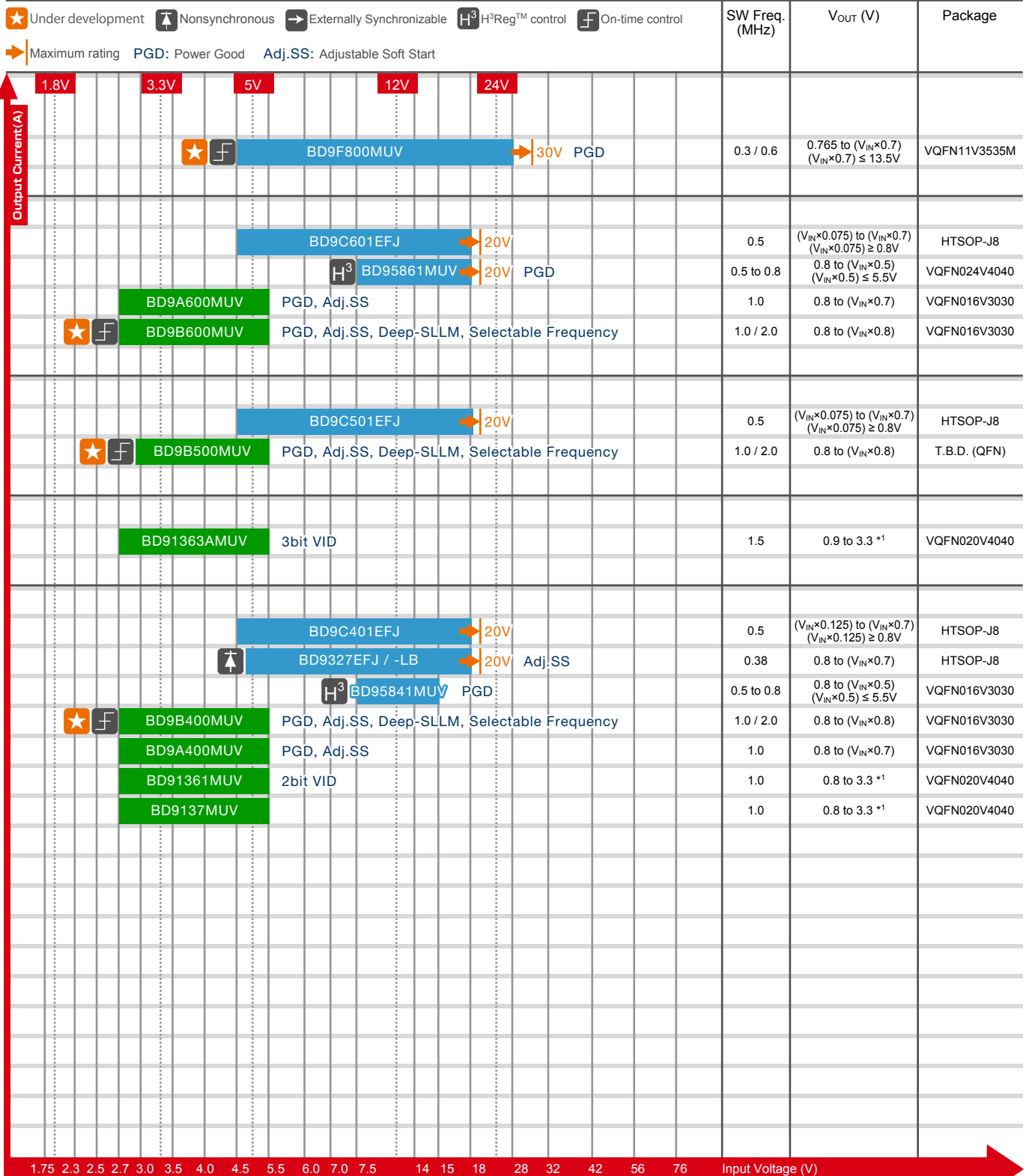


DC/DC Switching Regulators

Single Buck Converters (Integrated Switch) $I_o \leq 8.0A$

■ PWM Mode
 ■ Light-Load Efficiency

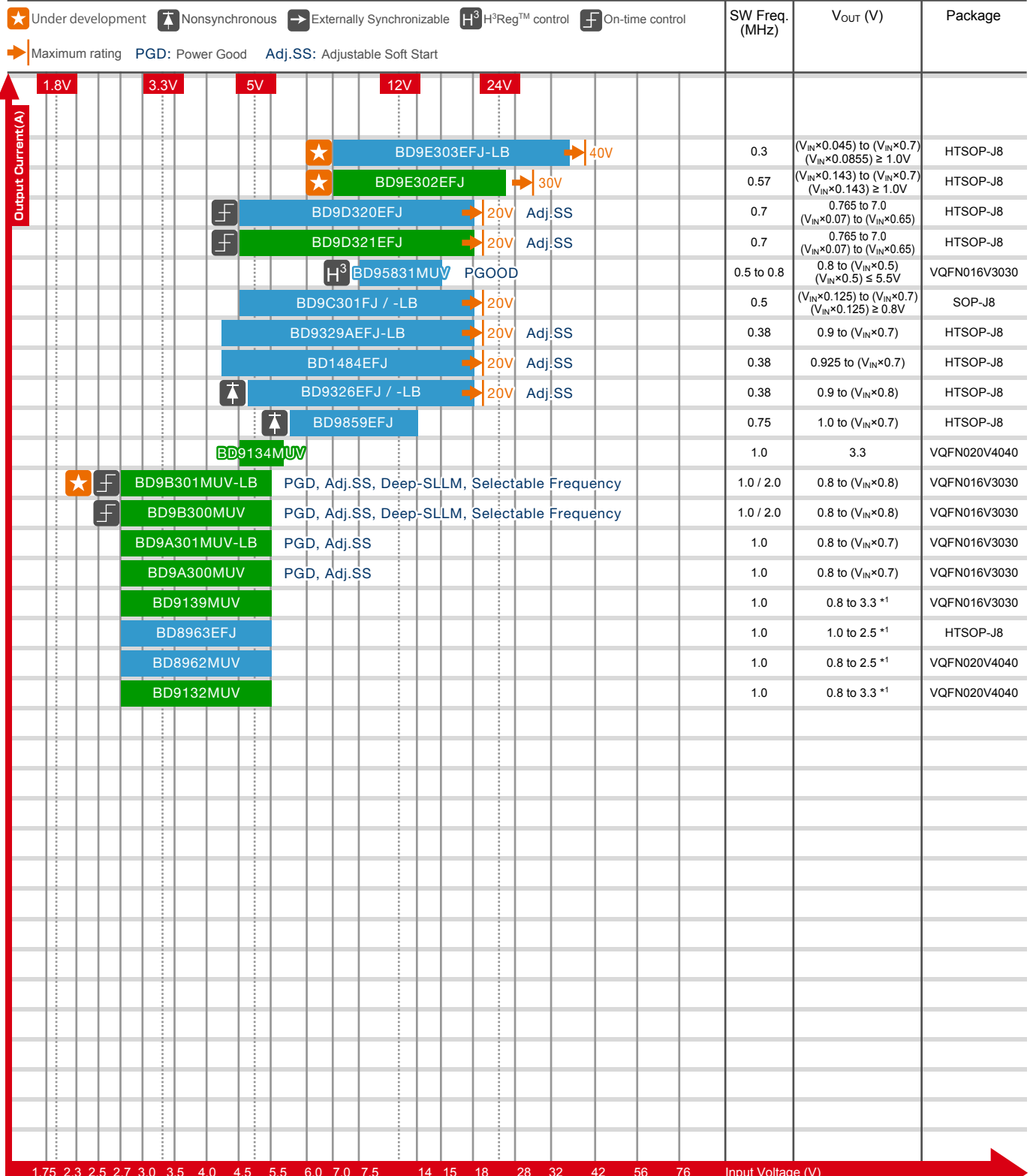


*1 Output voltage is limited depending on the I/O voltage.

DC/DC Switching Regulators

Single Buck Converters (Integrated Switch) $I_o \leq 3.0A$

Light-Load Efficiency PWM Mode

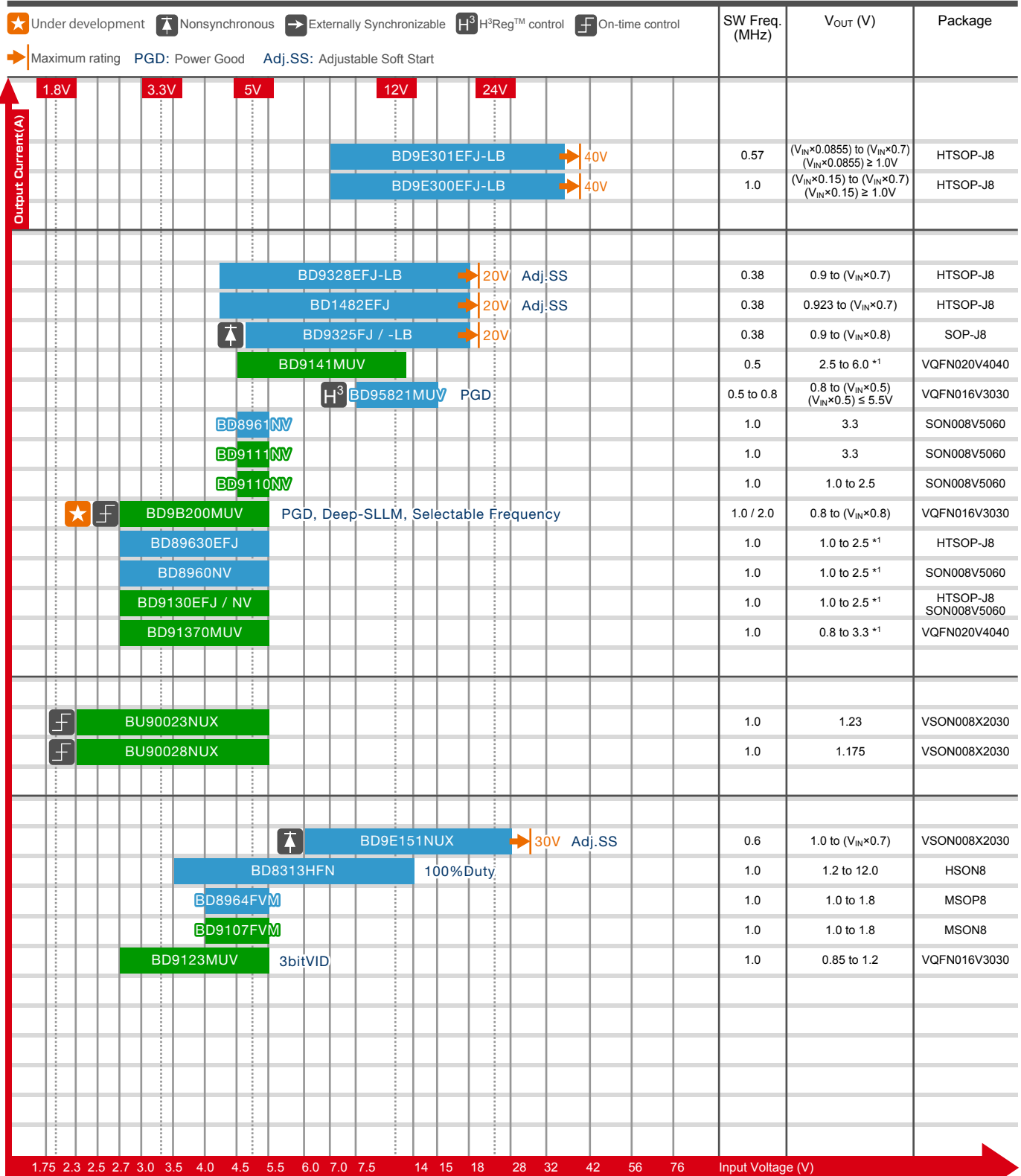


*1 Output voltage is limited depending on the I/O voltage.

DC/DC Switching Regulators

Single Buck Converters (Integrated Switch) $I_o \leq 2.5A$

Light-Load Efficiency PWM Mode

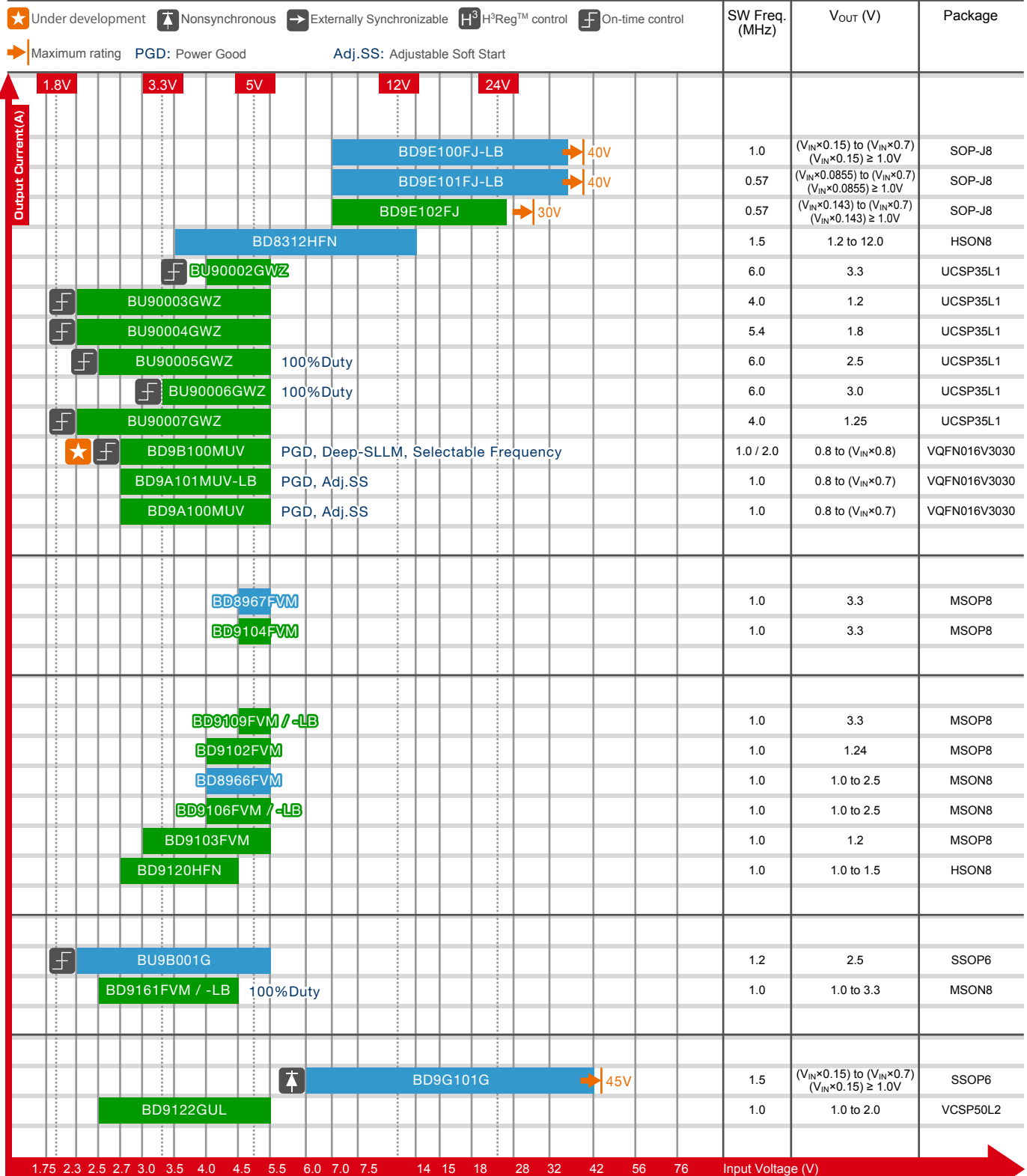


*1 Output voltage is limited depending on the I/O voltage.

DC/DC Switching Regulators

Single Buck Converters (Integrated Switch) $I_o \leq 1.0A$

Light-Load Efficiency PWM Mode

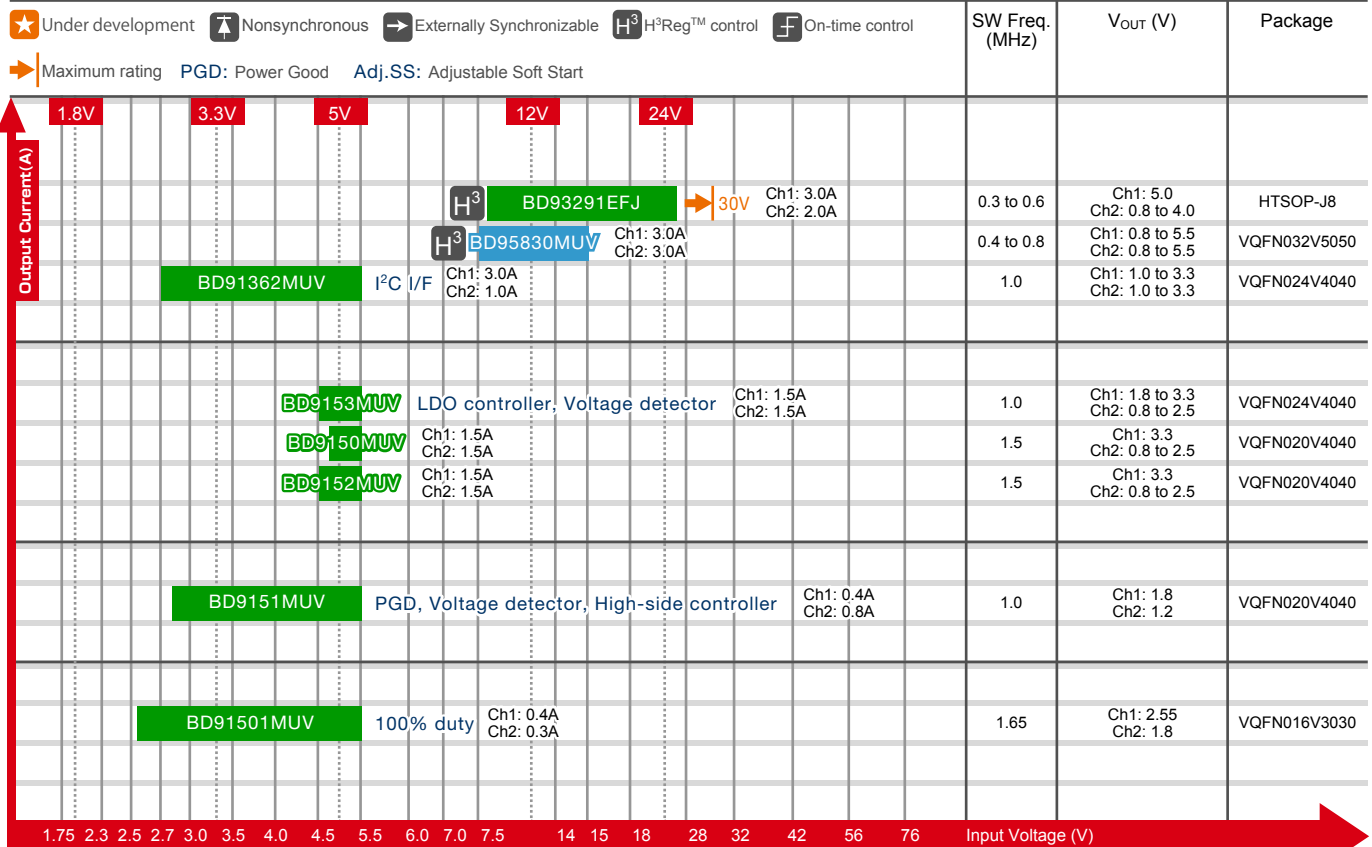


*1 Output voltage is limited depending on the I/O voltage.

DC/DC Switching Regulators

Dual Buck Converters (Integrated Switch)

Light-Load Efficiency PWM Mode

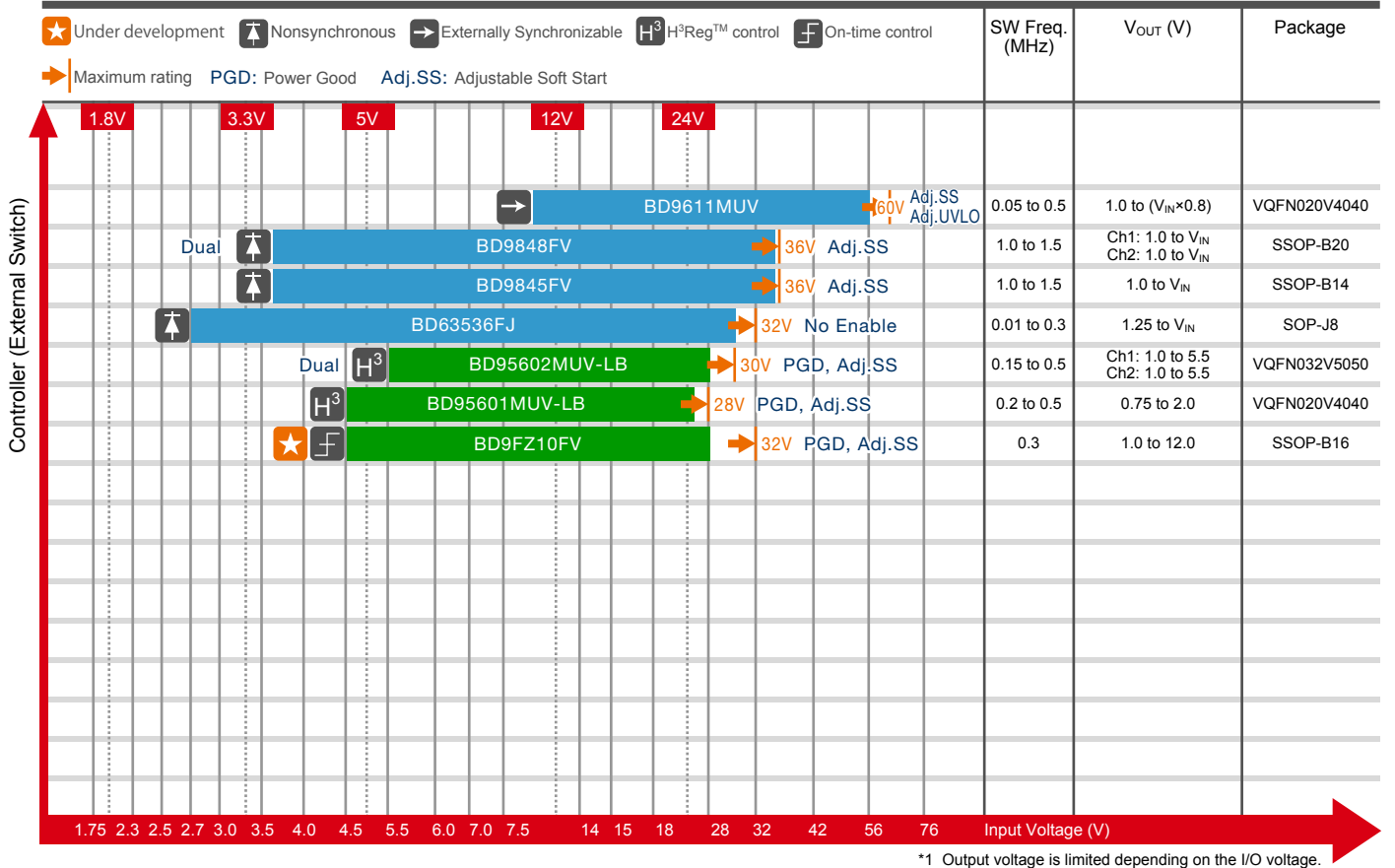


*1 Output voltage is limited depending on the I/O voltage.

DC/DC Switching Regulators

Buck Controllers (External Switch)

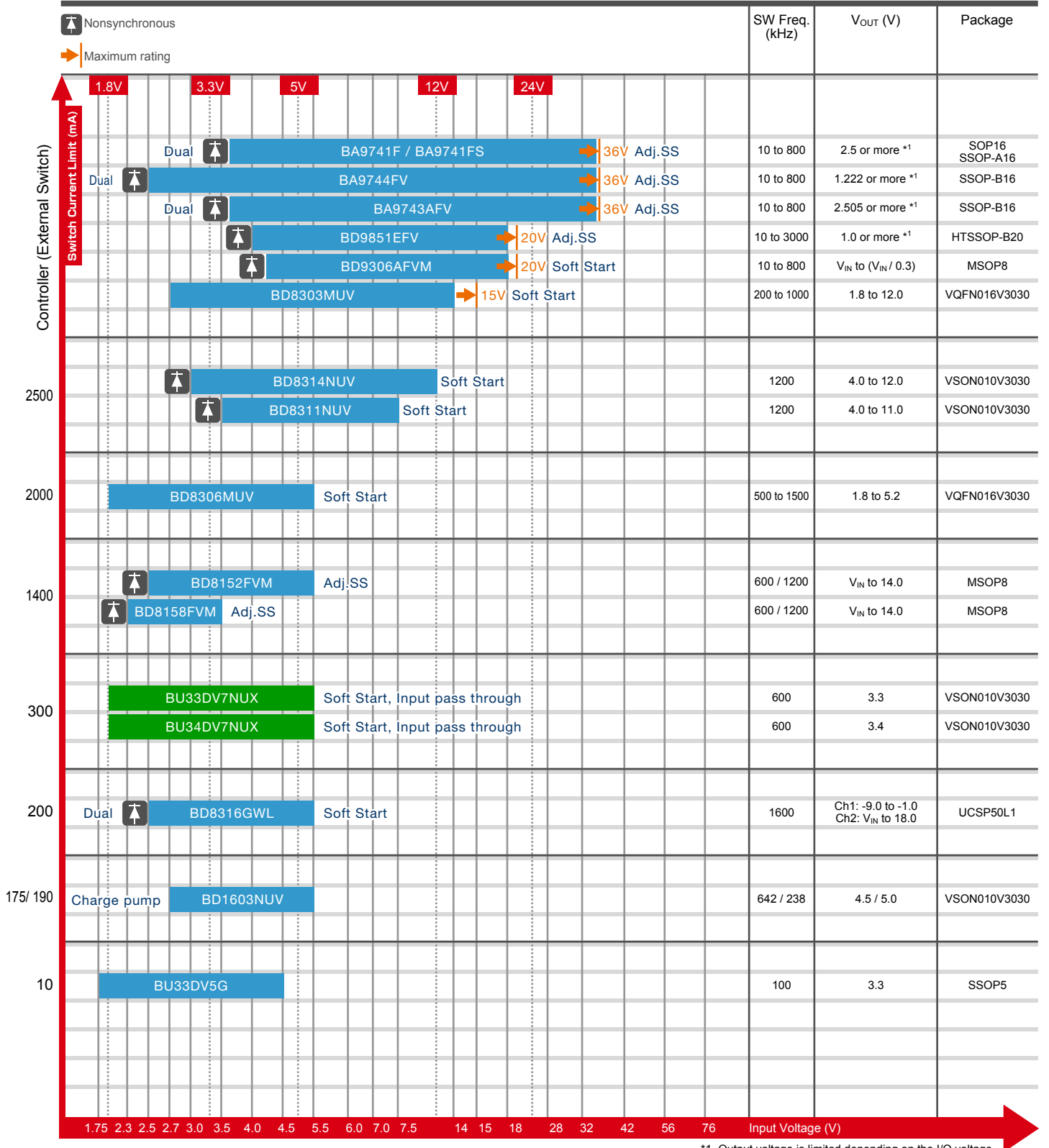
■ Light-Load Efficiency
 ■ PWM Mode



DC/DC Switching Regulators

Boost / Buck-Boost and Inverting Converters / Controllers (External Switch) / Charge pump

Light-Load Efficiency PWM Mode



*1 Output voltage is limited depending on the I/O voltage.

Isolated DC/DC Power Supplies

