

Fact Book 2012 1Q



【連結 Consolidated】

(2012年3月期 第1四半期決算データ) For the First Quarter of Fiscal Year ending March 31, 2012

		Page
1. 業績の概要	Results of Operations	
(1) 業績	Results of Operations	1
(2) 利益率	Income Ratio	1
2. 売上	Sales	
(1) セグメント別売上高	Sales by Segment	2
(2) 地域別売上高	Sales by Region	2
3. 売上原価・販管費・営業利益	Cost of Sales/S.G. & A. Expenses/Operating Income	
(1) 売上原価・販管費・営業利益	Cost of Sales/S.G.&A. Expenses/Operating Income	3
(2) 売上原価率・販管費比率	Cost of Sales as % of Net Sales/S.G.&A. Expenses as % of Net Sales	3
4. その他	Others	
(1) 為替レート	Exchange Rate	4
(2) 棚卸資産	Inventories	4
(3) 自己資本・総資産	Shareholders' Equity/Total Assets	5
(4) 1株当たり当期純利益・1株当たり純資産	Earnings per Share/Book Value per Share	5
データ集	Data	6,7
※ 計算式	Formula	7
貸借対照表・損益計算書及び包括利益計算書の推移 3-year Summary of B/S and P/L		8-10

- (注) 1. 当資料は投資分析を目的として作成しておりますので、投資分析にのみご使用ください。
2. 当資料の第2四半期～第4四半期の期間損益と係る数値については、当該四半期累計値から前四半期累計値を差し引いたものであり、四半期報告書に記載している数値と若干異なる場合があります。
3. 2012年3月期の予想は、現時点で得られた情報にもとづいて算定しております。従って、実際の業績は業況の変化などにより記載の予想とは大きく異なる場合があります。

- Note: 1. This data is prepared for investors investigation. Please pay attention to use this data only for investment analysis.
2. Profit & loss and related figures from 2Q to 4Q on this data might be different from those on the other Quartely report because the figures on this date were calculated by deducting the cumulative total at the last term from those at this term.
3. The forecasts for the fiscal year ending March 2012 are based upon assumptions which the company considers reasonable at this time. Actual results may differ considerably by the changes of environment and so forth.

ローム株式会社

広報IR室
〒615-8585 京都市右京区西院溝崎町21
Tel: (075) 315-5729 Fax: (075) 311-1363

ROHM Co., Ltd.

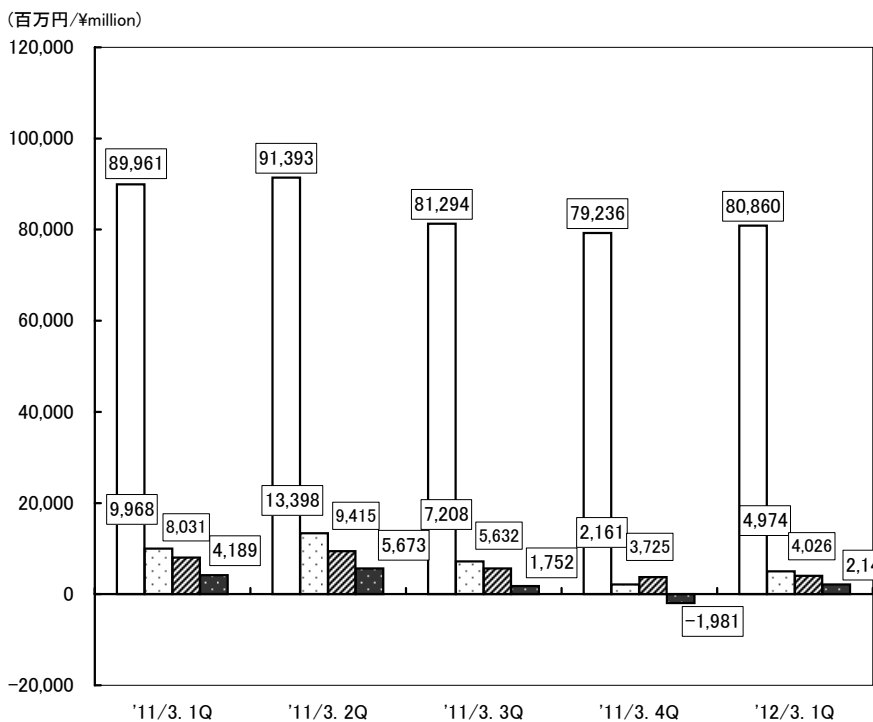
Public Relations and
Investor Relations Dept.
21, Saiin Mizosaki-cho, Ukyo-ku,
Kyoto 615-8585, Japan
Tel: +81 (75) 315-5729 Fax: +81 (75) 311-1363

1.業績の概要 Results of Operations

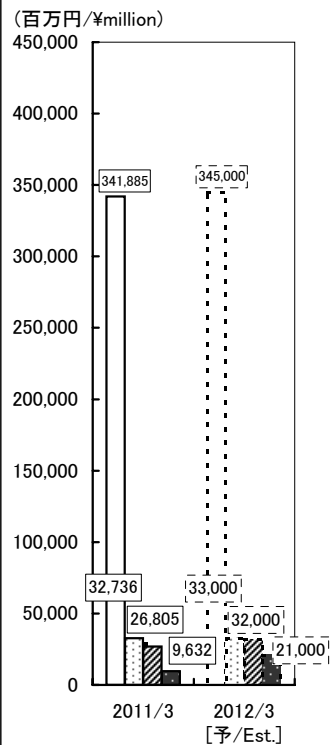
【連結 Consolidated】

(1)業績 Results of Operations

- 売上高 Net Sales
- 営業利益 Operating Income
- ▨ 経常利益 Ordinary Income
- 当期純利益 Net Income

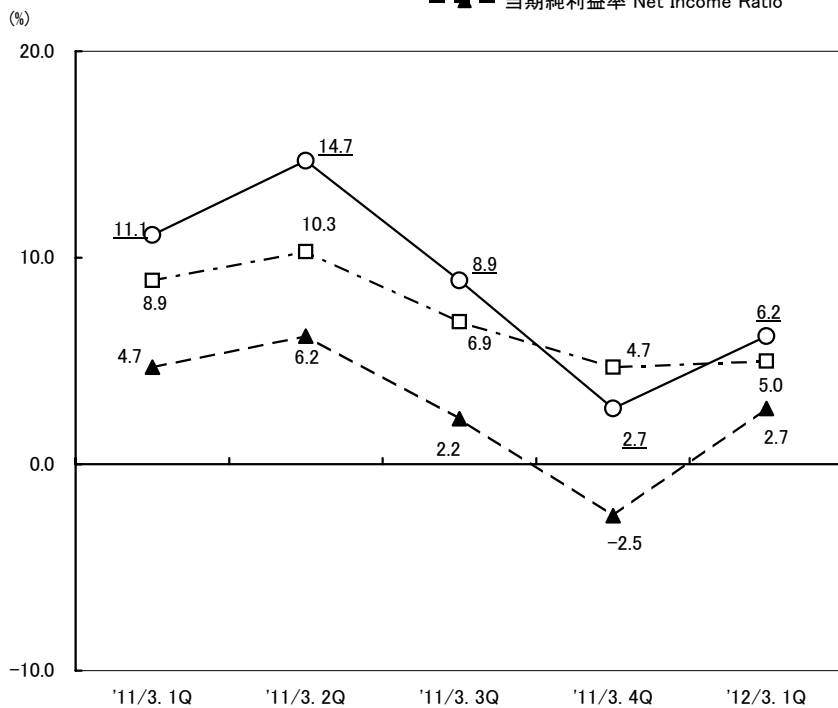


通期別推移 Annual Trend

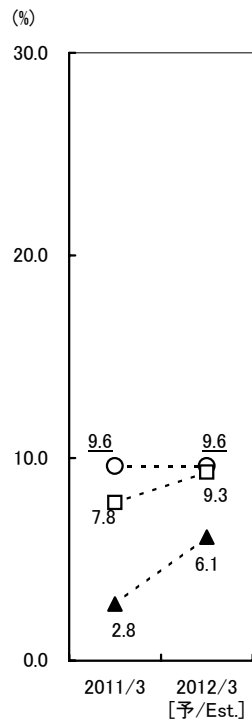


(2)利益率 Income Ratio

- 営業利益率 Operating Income Ratio
- 経常利益率 Ordinary Income Ratio
- ▲— 当期純利益率 Net Income Ratio



通期別推移 Annual Trend

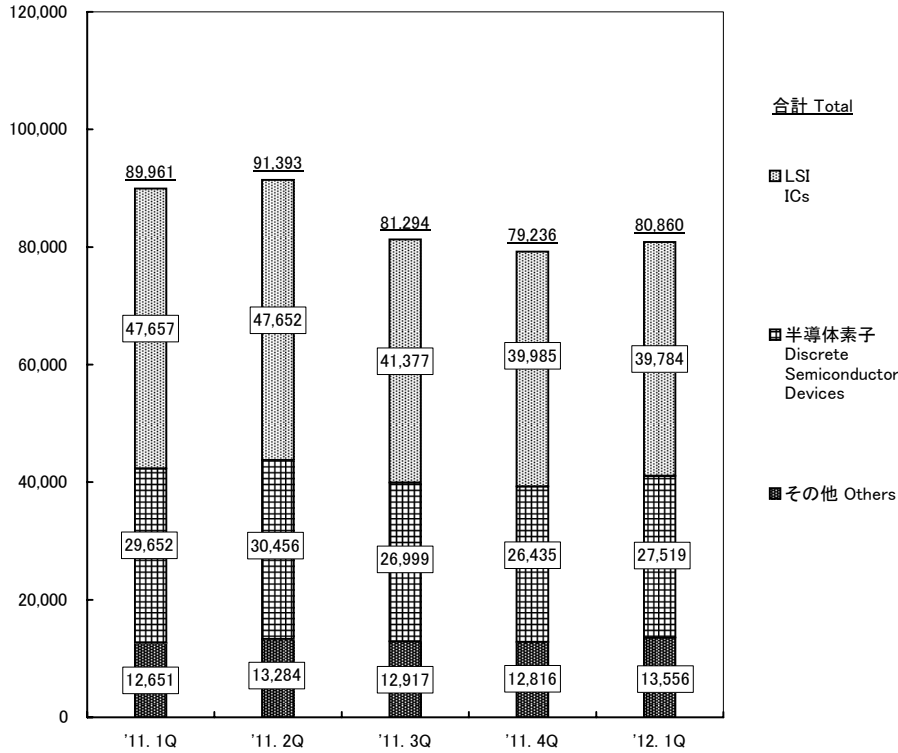


2.売上 Sales

【連結 Consolidated】

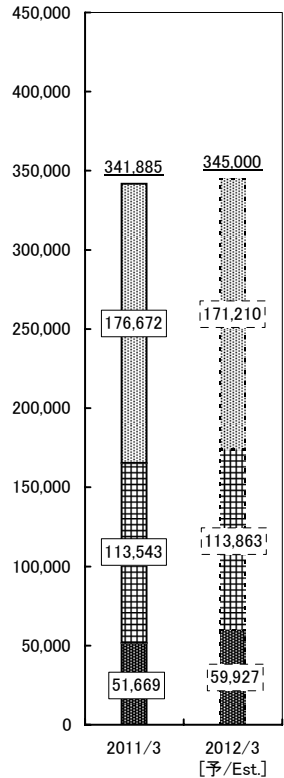
(1)セグメント別売上高 Sales by Segment

(百万円/¥million)



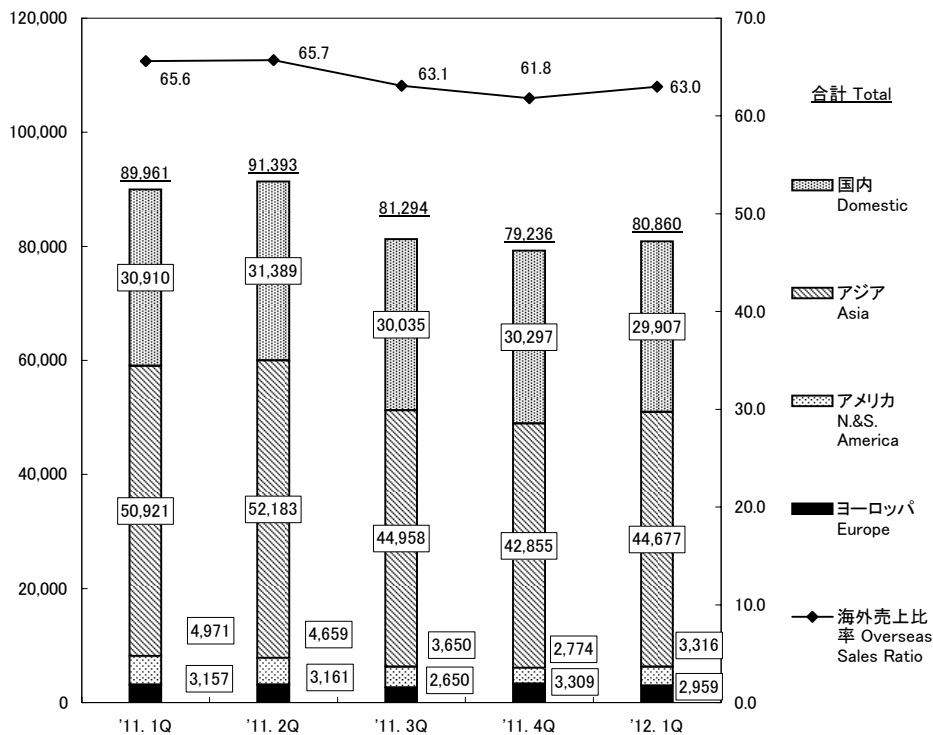
通期別推移 Annual Trend

(百万円/¥million)



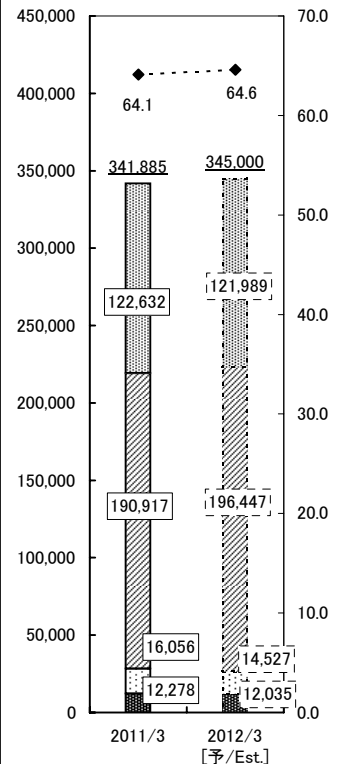
(2)地域別売上高 Sales by Region

(百万円/¥million)



通期別推移 Annual Trend

(百万円/¥million)

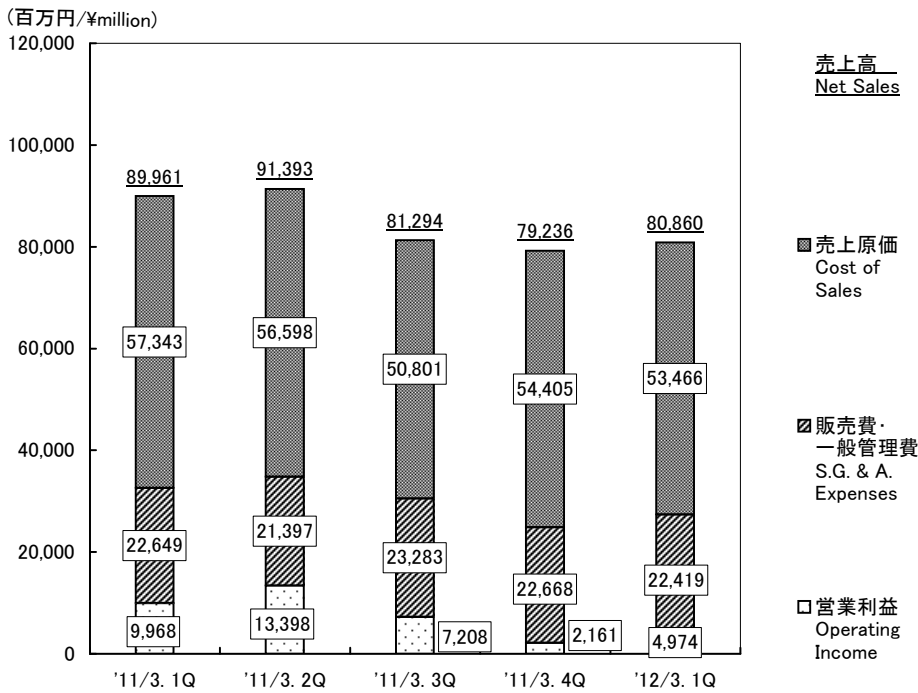


3. 売上原価・販管費・営業利益

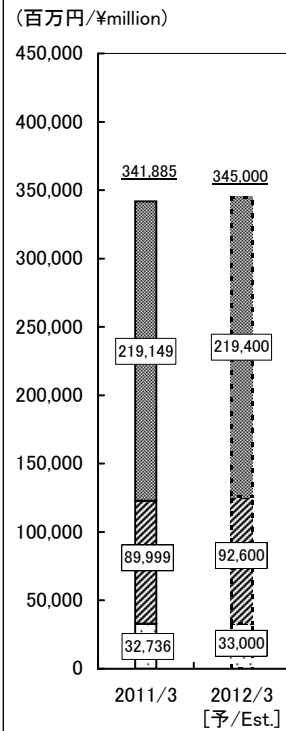
【連結 Consolidated】

Cost of Sales/S.G. & A. Expenses/Operating Income

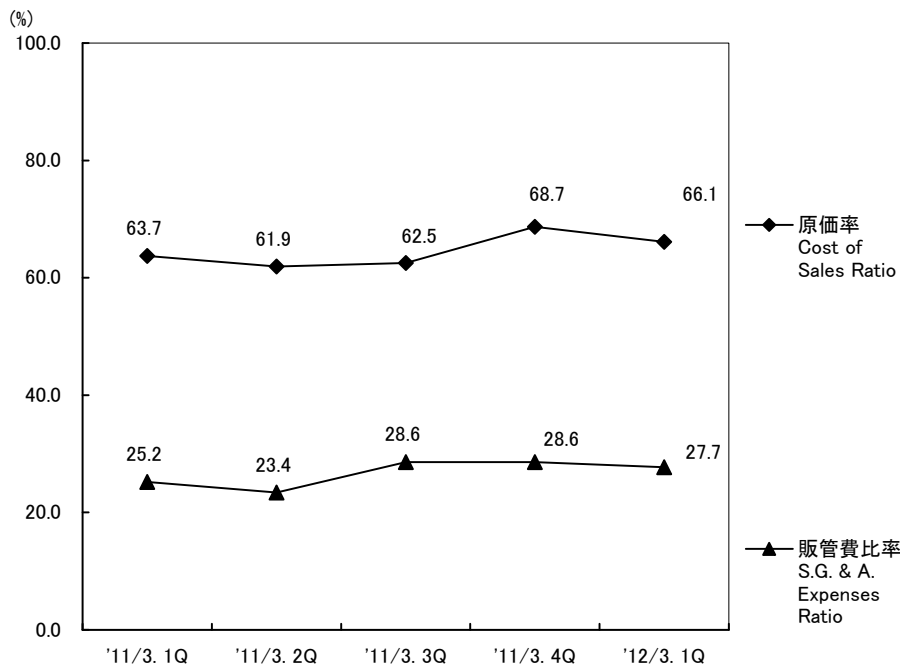
(1) 売上原価・販管費・営業利益 Cost of Sales/S.G. & A. Expenses /Operating Income



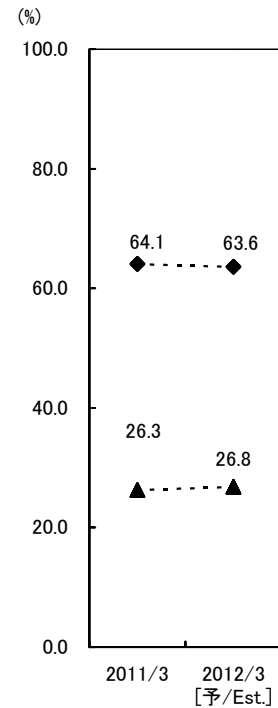
通期別推移 Annual Trend



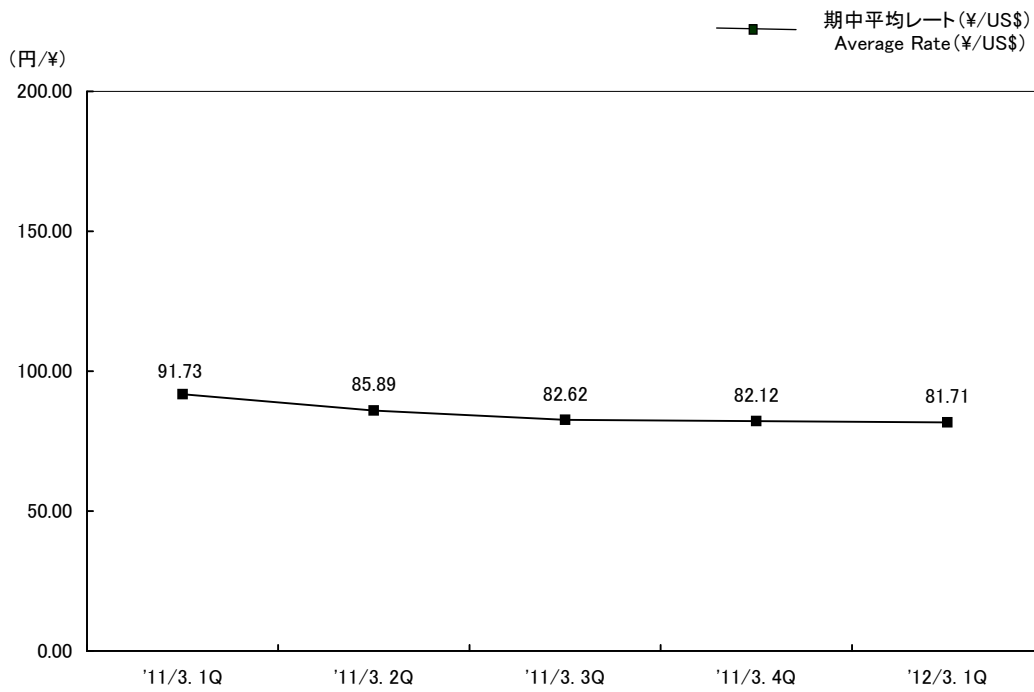
(2) 売上原価率・販管費比率 Cost of Sales as % of Net Sales / S.G. & A. Expenses as % of Net Sales



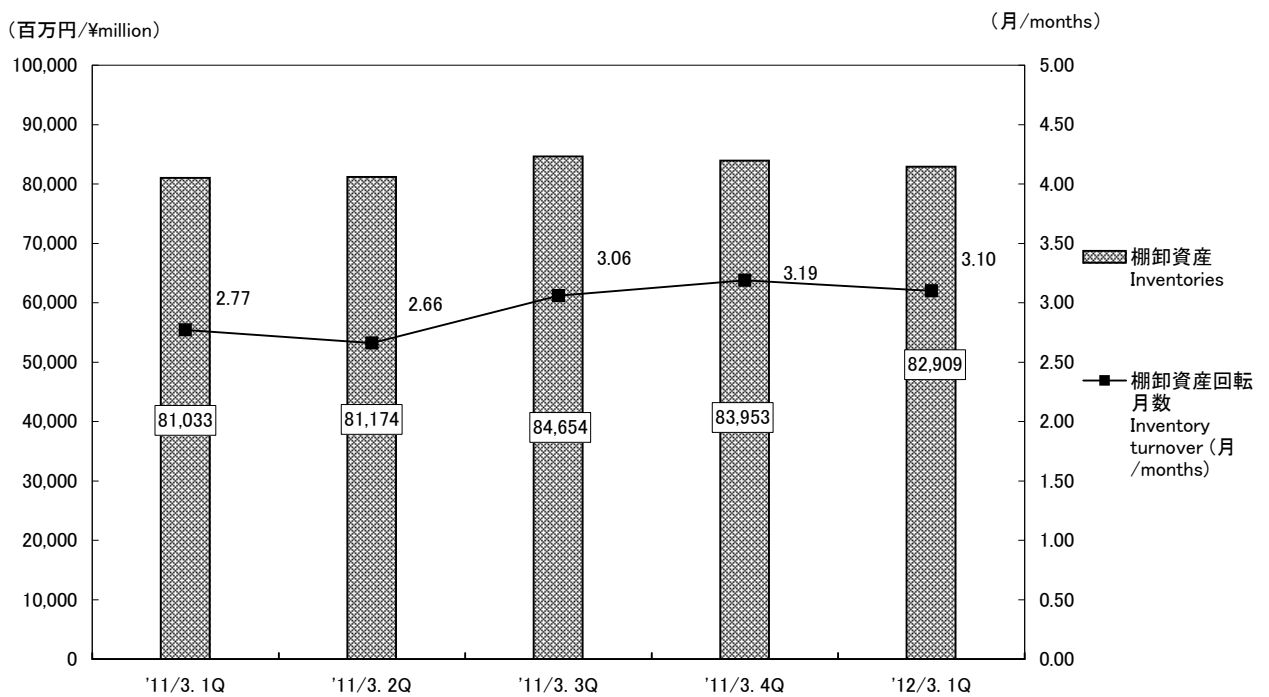
通期別推移 Annual Trend



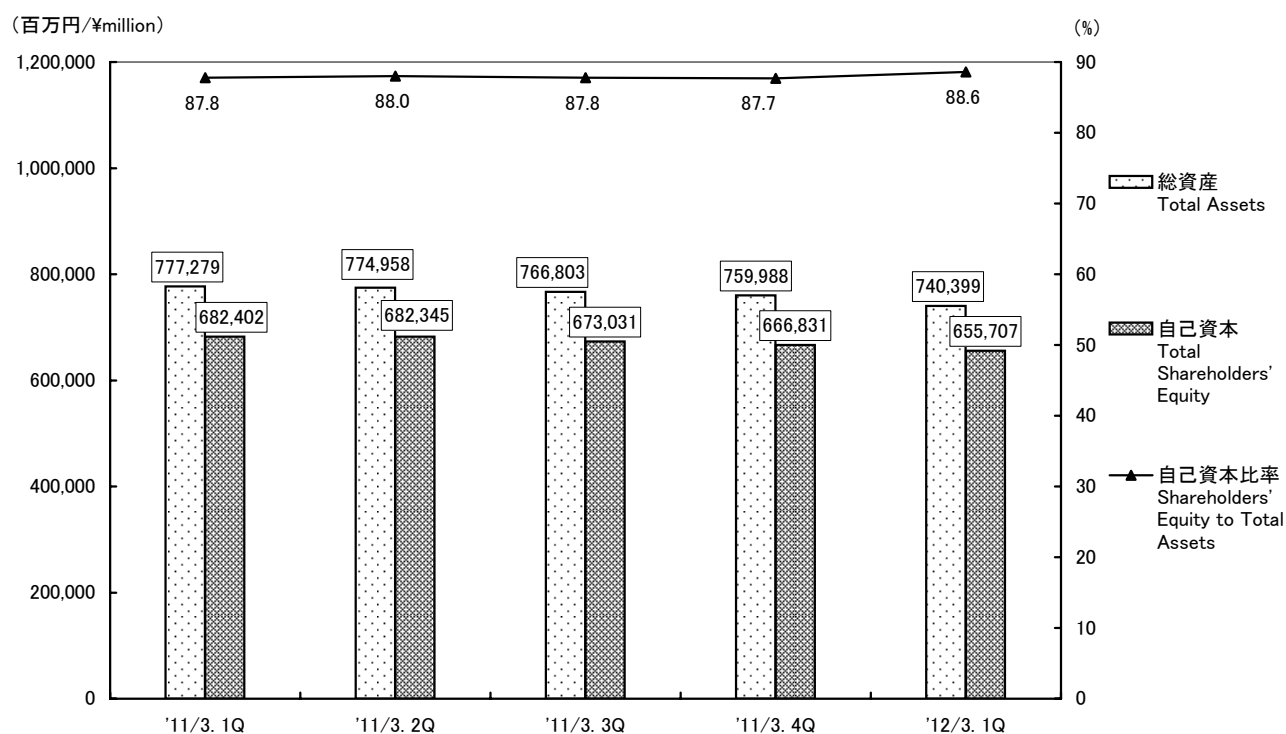
(1)為替レート
Exchange Rate



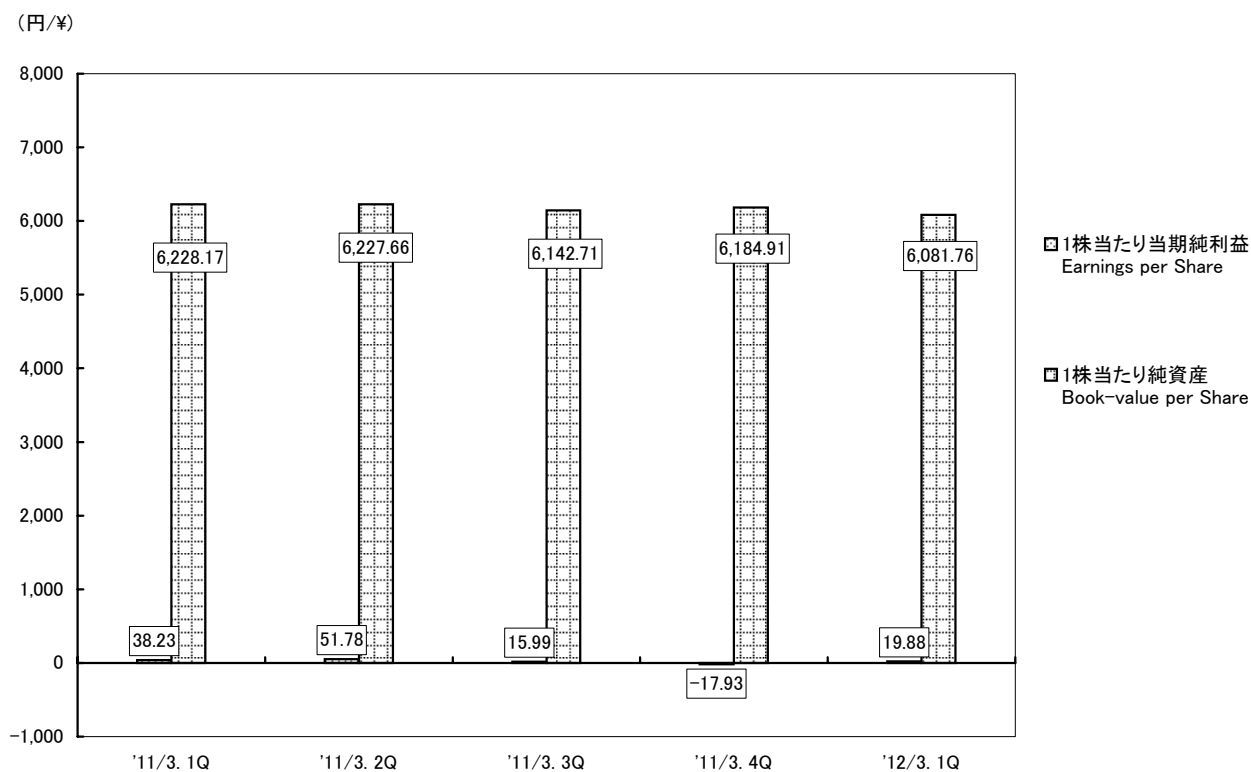
(2)棚卸資産
Inventories



(3) 自己資本・総資産
Shareholders' Equity/Total Assets



(4) 1株当たり当期純利益・1株当たり純資産
Earnings per Share/Book Value per Share



1-(1) 業績 Results of Operations

(百万円/¥million)

年度 Fiscal Year Ended	2010/3				2011/3				2012/3
	1Q	2Q	3Q	4Q	1Q	2Q	3Q	4Q	1Q
売上高 Net Sales	76,559	89,741	86,986	82,353	89,961	91,393	81,294	79,236	80,860
営業利益 Operating Income	-4,918	8,488	10,455	4,784	9,968	13,398	7,208	2,161	4,974
経常利益 Ordinary Income	-5,074	5,847	11,912	4,599	8,031	9,415	5,632	3,725	4,026
当期利益 Net Income	-3,724	2,308	6,618	1,930	4,189	5,673	1,752	-1,981	2,143

1-(2) 利益率 Income Ratio

(%)

年度 Fiscal Year Ended	2010/3				2011/3				2012/3
	1Q	2Q	3Q	4Q	1Q	2Q	3Q	4Q	1Q
営業利益率 Operating Income Ratio	-6.4	9.5	12.0	5.8	11.1	14.7	8.9	2.7	6.2
経常利益率 Ordinary Income Ratio	-6.6	6.5	13.7	5.6	8.9	10.3	6.9	4.7	5.0
当期純利益率 Net Income Ratio	-4.9	2.6	7.6	2.3	4.7	6.2	2.2	-2.5	2.7

2-(1) セグメント別売上高 Sales by Segment

(百万円/¥million)

年度 Fiscal Year Ended	2010/3				2011/3				2012/3
	1Q	2Q	3Q	4Q	1Q	2Q	3Q	4Q	1Q
合計 Total	76,559	89,741	86,986	82,353	89,961	91,393	81,294	79,236	80,860
LSI ICs	41,255	49,398	47,367	44,130	47,657	47,652	41,377	39,985	39,784
半導体素子 Discrete Semiconductor Devices	24,725	28,658	28,043	26,887	29,652	30,456	26,999	26,435	27,519
その他 Others	10,578	11,683	11,575	11,335	12,651	13,284	12,917	12,816	13,556

2-(2) 地域別売上高 Sales by Region

(百万円/¥million)

年度 Fiscal Year Ended	2010/3				2011/3				2012/3
	1Q	2Q	3Q	4Q	1Q	2Q	3Q	4Q	1Q
海外売上比率 Overseas Sales Ratio(%)	58.6	66.8	61.6	61.7	65.6	65.7	63.1	61.8	63.0
国内 Domestic	31,679	29,782	33,366	31,523	30,910	31,389	30,035	30,297	29,907
アジア Asia	39,471	53,429	46,483	41,893	50,921	52,183	44,958	42,855	44,677
アメリカ N.&S. America	2,760	3,776	4,206	5,474	4,971	4,659	3,650	2,774	3,316
ヨーロッパ Europe	2,647	2,752	2,929	3,461	3,157	3,161	2,650	3,309	2,959

3-(1) 売上原価・販管費・営業利益 Cost of Sales/S.G. & A. Expenses/Operating Income

(百万円/¥million)

年度 Fiscal Year Ended	2010/3				2011/3				2012/3
	1Q	2Q	3Q	4Q	1Q	2Q	3Q	4Q	1Q
売上高 Net Sales	76,559	89,741	86,986	82,353	89,961	91,393	81,294	79,236	80,860
売上原価 Cost of Sales	60,124	60,143	54,410	55,152	57,343	56,598	50,801	54,405	53,466
販売費・一般管理費 S.G. & A. Expenses	21,353	21,109	22,119	22,417	22,649	21,397	23,283	22,668	22,419
営業利益 Operating Income	-4,918	8,488	10,455	4,784	9,968	13,398	7,208	2,161	4,974

3-(2) 売上原価率・販管費比率 Cost of Sales as % of Net Sales/S.G. & A. Expenses as % of Net Sales

(%)

年度 Fiscal Year Ended	2010/3				2011/3				2012/3
	1Q	2Q	3Q	4Q	1Q	2Q	3Q	4Q	1Q
原価率 Cost of Sales Ratio	78.5	67.0	62.6	67.0	63.7	61.9	62.5	68.7	66.1
販管費比率 S.G. & A. Expenses Ratio	27.9	23.5	25.4	27.2	25.2	23.4	28.6	28.6	27.7

4-(1) 為替レート Exchange Rate

(円/¥)

年度 Fiscal Year Ended	2010/3				2011/3				2012/3
	1Q	2Q	3Q	4Q	1Q	2Q	3Q	4Q	1Q
期中平均レート(¥/US\$) Average Rate	97.13	93.61	90.14	91.09	91.73	85.89	82.62	82.12	81.71

4-(2) 棚卸資産 Inventories

(百万円/¥million)

年度 Fiscal Year Ended	2010/3				2011/3				2012/3
	1Q	2Q	3Q	4Q	1Q	2Q	3Q	4Q	1Q
棚卸資産 Inventories	80,707	76,992	81,960	85,358	81,033	81,174	84,654	83,953	82,909
棚卸資産回転率 Inventory turnover(月/months)	3.33	2.64	2.74	3.05	2.77	2.66	3.06	3.19	3.10

4-(3) 自己資本・総資産 Shareholders' Equity/Total Assets

(百万円/¥million)

年度 Fiscal Year Ended	2010/3				2011/3				2012/3
	1Q	2Q	3Q	4Q	1Q	2Q	3Q	4Q	1Q
総資産 Total Assets	786,807	781,701	787,053	807,339	777,279	774,958	766,803	759,988	740,399
自己資本 Total Shareholders' Equity	700,968	689,792	695,712	705,528	682,402	682,345	673,031	666,831	655,707
自己資本比率 Shareholders' Equity to Total Assets(%)	89.1	88.2	88.4	87.4	87.8	88.0	87.8	87.7	88.6

4-(4) 1株当たり当期純利益・1株当たり純資産 Earnings per Share/Book Value per Share

(円/¥)

年度 Fiscal Year Ended	2010/3				2011/3				2012/3
	1Q	2Q	3Q	4Q	1Q	2Q	3Q	4Q	1Q
1株当たり当期純利益 Earnings per Share	-33.99	21.07	60.41	17.61	38.23	51.78	15.99	-17.93	19.88
1株当たり純資産 Book Value per Share	6,397.46	6,295.49	6,349.56	6,439.19	6,228.17	6,227.66	6,142.71	6,184.91	6,081.76

<御参考>

Reference

セグメントの名称 Segment	主な製品及び事業の名称 Main Products and Business				
LSI ICs	アナログ Analog	ロジック Logic	メモリ Memory	ASIC	ファウンドリ Foundry
半導体素子 Discrete Semiconductor Devices	ダイオード Diodes	トランジスタ Transistors	発光ダイオード Light Emitting Diodes	半導体レーザ Laser Diodes	
その他 Others	抵抗器 Resistors	プリントヘッド Printheads	オプティカル・モジュール Optical Modules	タンタルコンデンサ Tantalum Capacitors	
	パワーモジュール Power Modules	ライティング(照明) Lightings			

※計算式 Formula

■ 棚卸資産回転月数 =
Inventory turnover

$$\frac{\text{(期初棚卸資産 + 期末棚卸資産)}}{2} \div \frac{\text{直近3ヶ月の月平均売上}}{\text{Average of the nearest 3 months sales of the term}}$$

■ 1株当たり当期純利益 =
EPS

$$\frac{\text{当期純利益}}{\text{Net Income}} \div \frac{\text{期中平均発行済株式数}}{\text{Average number of Issued common stock}}$$

■ 1株当たり純資産 =
Book Value per Share

$$\frac{\text{純資産の部合計 - 少数株主持分}}{\text{Total Net Assets - Minority Interests}} \div \frac{\text{期末発行済株式数}}{\text{Issued Common Stock at the term end}}$$

貸借対照表・損益計算書の推移
3-Year Summary

【連結 Consolidated】

連結貸借対照表 Consolidated Balance Sheets

(百万円/¥million)

年度 Fiscal Year Ended	'10/3				'11/3				'12/3
	1Q	2Q	3Q	4Q	1Q	2Q	3Q	4Q	1Q
《資産の部》 《Assets》									
流動資産 Total current assets	445,845	449,544	442,972	462,434	446,706	446,650	440,421	436,247	422,680
現金及び預金 Cash and time deposits	255,809	256,920	241,908	271,224	259,563	251,611	230,498	230,286	217,677
受取手形及び売掛金 Notes and accounts receivable-trade	70,377	80,585	81,953	78,258	79,917	80,932	75,922	73,297	73,489
有価証券 Securities	20,015	18,283	21,398	8,802	8,840	14,433	30,375	28,094	25,802
たな卸資産 Inventories	80,707	76,992	81,960	85,358	81,033	81,174	84,654	83,953	82,909
前払年金費用 Prepaid pension cost	3,289	3,166	3,026	2,614	2,448	2,419	2,337	2,263	2,258
繰延税金資産 Deferred tax assets	7,687	7,982	6,450	10,516	9,206	8,998	8,888	8,475	8,830
未収還付法人税等 Refundable income taxes	2,570	558	735	661	684	868	952	397	275
その他 Other	5,911	5,593	5,911	5,327	5,343	6,533	7,082	9,765	11,729
貸倒引当金 Allowance for doubtful notes and accounts	-524	-538	-372	-329	-332	-320	-291	-286	-293
固定資産 Fixed Assets	340,961	332,157	344,081	344,904	330,572	328,307	326,381	323,741	317,718
有形固定資産 Total tangible fixed assets	274,897	265,095	261,140	260,697	255,582	254,506	251,877	252,216	249,339
建物及び構築物 Buildings and structures	210,076	207,994	206,968	213,984	211,681	212,124	210,475	211,806	210,592
機械装置及び運搬具 Machinery, equipment and vehicles	464,756	463,447	466,930	471,925	468,487	473,444	471,545	476,651	472,652
工具器具及び備品 Tools and furniture	43,642	43,604	43,448	43,266	42,223	42,225	41,469	42,672	42,551
土地 Land	84,490	84,741	85,015	85,501	85,242	85,315	85,334	85,903	85,760
建設仮勘定 Construction in progress	16,271	13,851	15,646	14,838	14,426	14,087	13,183	15,026	15,472
減価償却累計額 Accumulated depreciation	-544,339	-548,544	-556,869	-568,819	-566,480	-572,692	-570,130	-579,844	-577,690
無形固定資産 Intangible fixed assets	21,363	22,551	38,909	37,929	35,273	32,214	30,124	28,225	25,814
投資その他の資産 Investments and other assets	44,700	44,511	44,031	46,278	39,717	41,586	44,379	43,299	42,564
投資有価証券 Investment securities	34,137	34,415	34,959	38,693	32,896	35,900	38,903	37,159	36,981
繰延税金資産 Deferred tax assets	4,257	4,319	3,788	2,206	2,185	2,096	1,832	1,597	1,239
その他 Other	6,647	6,486	5,995	5,991	5,243	4,195	4,244	5,088	4,888
貸倒引当金 Allowance for doubtful accounts	-341	-710	-712	-612	-608	-604	-600	-545	-544
資産合計 Total assets	786,807	781,701	787,053	807,339	777,279	774,958	766,803	759,988	740,399

連結貸借対照表 Consolidated Balance Sheets

(百万円/¥million)

年度 Fiscal Year Ended	'10/3				'11/3				'12/3
	1Q	2Q	3Q	4Q	1Q	2Q	3Q	4Q	1Q
《負債の部》 《Liabilities》									
流動負債 Current liabilities	52,610	59,402	58,091	68,849	64,229	62,068	64,245	64,333	56,571
支払手形及び買掛金 Notes and accounts payable-trade	17,033	20,707	22,203	20,995	22,840	22,797	23,594	21,904	21,101
未払金 Other accounts payable	14,986	20,727	18,166	28,697	23,738	19,756	11,370	22,486	17,792
未払法人税等 Accrued income taxes	1,063	2,891	2,392	4,003	2,717	3,855	2,915	3,180	2,002
繰延税金負債 Deferred tax liabilities	1,565	1,216	1,284	1,110	1,136	972	1,416	1,053	656
その他 Other	17,961	13,858	14,045	14,042	13,795	14,686	24,948	15,709	15,018
固定負債 Long-term liabilities	31,326	30,422	31,151	30,770	28,869	28,722	27,769	26,876	26,235
繰延税金負債 Deferred tax liabilities	15,414	15,729	16,841	18,336	16,315	16,404	17,108	16,554	16,369
退職給付(与)引当金 Liability for retirement benefits	12,026	10,930	10,989	10,210	10,244	10,346	8,490	8,344	8,180
その他 Other	3,886	3,763	3,320	2,223	2,309	1,971	2,169	1,976	1,685
負債合計 Total liabilities	83,937	89,825	89,243	99,620	93,098	90,791	92,015	91,209	82,806
《純資産の部》 《Net assets》									
株主資本 Shareholders' equity	766,543	768,849	768,341	770,267	767,329	773,001	767,626	755,641	750,775
資本金 Common stock	86,969	86,969	86,969	86,969	86,969	86,969	86,969	86,969	86,969
資本剰余金 Capital surplus	102,403	102,403	102,403	102,403	102,403	102,403	102,403	102,403	102,403
利益剰余金 Retained earnings	634,263	636,571	636,068	637,999	635,066	640,739	635,370	633,388	611,484
自己株式 Treasury stock -at cost	-57,093	-57,096	-57,100	-57,105	-57,110	-57,111	-57,116	-67,120	-50,082
その他包括利益累計額 Other comprehensive income									
その他有価証券評価差額金 Net unrealized gain on available-for-sales securities	4,532	5,173	5,588	8,121	4,059	4,485	6,372	5,859	5,466
為替換算調整勘定 Foreign currency translation adjustments	-70,107	-84,230	-78,217	-72,860	-88,987	-95,141	-100,967	-94,669	-100,534
その他包括利益累計額合計 Total other comprehensive income	-65,575	-79,057	-72,629	-64,739	-84,928	-90,656	-94,595	-88,810	-95,067
少数株主持分 Minority interests	1,901	2,083	2,097	2,189	1,778	1,821	1,757	1,947	1,884
純資産合計 Total net assets	702,869	691,876	697,809	707,718	684,180	684,166	674,788	668,778	657,592
負債・純資産合計 Total liabilities and net assets	786,807	781,701	787,053	807,339	777,279	774,958	766,803	759,988	740,399

連結損益計算書 Consolidated Statements of Income

年度 Fiscal Year Ended	(百万円/¥million)									
	'10/3				'11/3				'12/3	
	1Q	2Q	3Q	4Q	1Q	2Q	3Q	4Q	1Q	
《営業損益の部》 《Operating revenues and expenses》										
売上高 Net sales	76,559	89,741	86,986	82,353	89,961	91,393	81,294	79,236	80,860	
売上原価 Cost of sales	60,124	60,143	54,410	55,152	57,343	56,598	50,801	54,405	53,466	
販売費及び一般管理費 Selling, general and administrative expenses	21,353	21,109	22,119	22,417	22,649	21,397	23,283	22,668	22,419	
営業利益 Operating Income	-4,918	8,488	10,455	4,784	9,968	13,398	7,208	2,161	4,974	
《営業外損益の部》 《Non-operating income and expenses》										
営業外収益 Non-operating income	1,103	605	469	318	596	348	584	441	732	
営業外費用 Non-operating expenses	1,259	3,245	-986	502	2,532	4,330	2,160	-1,121	1,681	
経常利益 Ordinary income	-5,074	5,847	11,912	4,599	8,031	9,415	5,632	3,725	4,026	
《特別損益の部》 《Extraordinary gain and loss》										
特別利益 Extraordinary gains	12	18	242	158	16	4	1,890	8	255	
特別損失 Extraordinary losses	1,051	1,253	1,437	3,138	619	46	3,797	4,860	773	
税金等調整前当期純利益(-損) Income before income taxes and minority interests(losses)	-6,113	4,612	10,717	1,619	7,428	9,373	3,725	-1,126	3,508	
法人税、住民税及び事業税 Income taxes-current	722	2,866	1,286	2,396	1,920	2,906	1,411	1,134	1,416	
法人税等調整額 Income taxes-deferred	-2,977	-427	2,810	-2,676	1,388	778	427	-442	18	
少数株主利益(-損失) Minority interests(losses)	-133	-135	0	-30	-69	15	134	162	-70	
当期純利益 Net income	-3,724	2,308	6,618	1,930	4,189	5,673	1,752	-1,981	2,143	

連結包括利益計算書 Consolidated Statements of Comprehensive Income

少数株主損益調整前当期純利 Income before minority interests	-	-	-	-	4,119	-	-	-	2,072	
その他有価証券評価差額金 Net unrealized gain on available-for-sale securities	-	-	-	-	-4,061	-	-	-	-393	
為替換算調整勘定 Foreign currency translation adjustments	-	-	-	-	-16,168	-	-	-	-5,878	
その他の包括利益合計 Total other comprehensive income	-	-	-	-	-20,229	-	-	-	-6,271	
親会社株主に係る包括利益 Owners of the parent	-	-	-	-	-15,999	-	-	-	-4,114	
少数株主に係る包括利益 Minority interests	-	-	-	-	-110	-	-	-	-84	
包括利益 Comprehensive income	-	-	-	-	-16,110	-	-	-	-4,198	