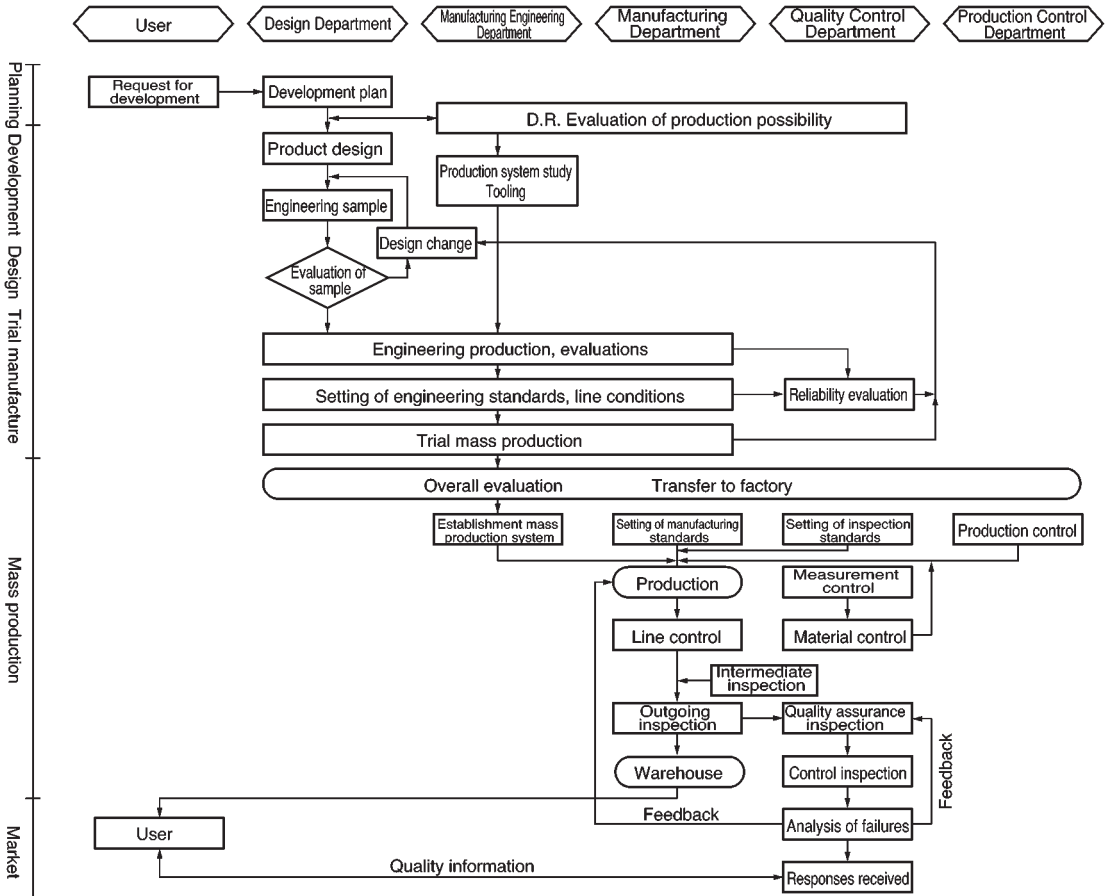


# Quality assurance and reliability

We design, manufacture, and sell our sensors with the top priority on quality. Our system for ensuring high quality products is as follows.



### ●Life

The life of semiconductors is often said to be limitless. However, this is not the case for infrared LEDs, as they lose output power.

When designing circuitry for an infrared LED, design in sufficient margin to allow for the LED's life (loss of output power). Typical changes in output power as time elapses are shown below. In cases where current will pass for prolonged periods of time, be sure to allow sufficient design margin so that the circuit will not malfunction if the output falls to the level of the maximum fall-off curve.

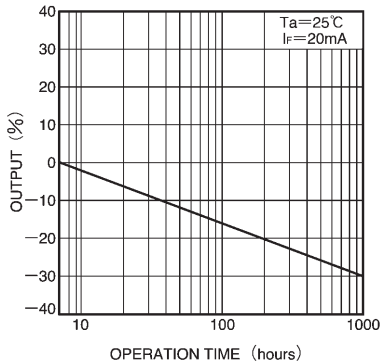


Fig.1 Example: Change of  $P_o$  vs. time for SIR-56ST infrared LED

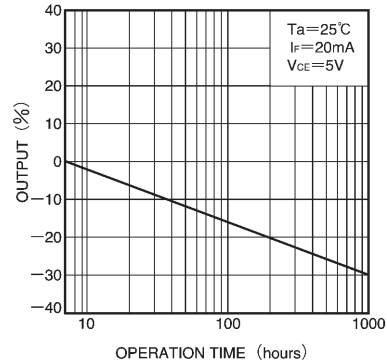


Fig.2 Example: Change of  $I_c$  vs. time for RPR-359F photoreflector

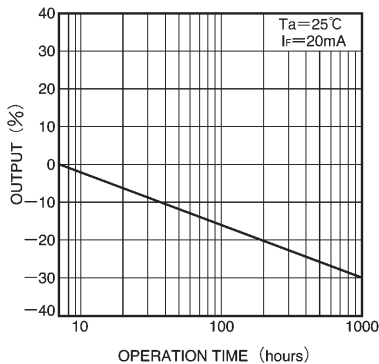


Fig.3 Example: Change of  $P_o$  vs. time for SIM-20ST infrared LED

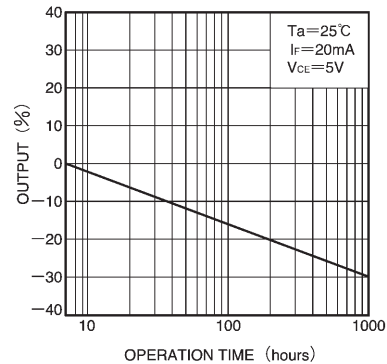


Fig.4 Example: Change of  $I_c$  vs. time for RPI-574 photointerrupter

●Reliability

There are two broad categories of reliability testing : life testing and environmental testing.

ROHM has standardized its procedures to accord with the standards of Japan Industrial Standards (JIS) and American military standards (MIL). Typical reliability testing procedures are shown in the following.

	Test	Testing conditions		Standards for determining failure
Life testing	High temperature	100°C	1000 hours	$V_F : U.S.L \times 1.2$ $P_o : U.S.L \times 0.7$ $I_R : U.S.L \times 3$ Note: U.S.L. is maximum allowed value of standard. L.S.L. is minimum allowed value of standard.
	High temperature, high humidity	85°C, 85%	1000 hours	
	Low temperature	-40°C	1000 hours	
	Load life	$I_F = 20\text{mA}$	1000 hours	
Environmental testing	Temperature cycling	-40°C ~ 100°C 20 cycles with each cycle as follows : (30 minutes) (30 minutes)		No detaching
	Soldering heat tolerance	260°C, 5 seconds, 2 times Bottom face of plastic immersed 2 mm into bath		
	Pulling leads	Load = 300 g	30 sec / lead	
	Bending leads	2 cycles with each cycle as follows : Bend with load of 100 g at 90°C then restore to original position.		
	Solderability	5 seconds at 230°C with flux		

### Notes

- No technical content pages of this document may be reproduced in any form or transmitted by any means without prior permission of ROHM CO.,LTD.
- The contents described herein are subject to change without notice. The specifications for the product described in this document are for reference only. Upon actual use, therefore, please request that specifications to be separately delivered.
- Application circuit diagrams and circuit constants contained herein are shown as examples of standard use and operation. Please pay careful attention to the peripheral conditions when designing circuits and deciding upon circuit constants in the set.
- Any data, including, but not limited to application circuit diagrams information, described herein are intended only as illustrations of such devices and not as the specifications for such devices. ROHM CO.,LTD. disclaims any warranty that any use of such devices shall be free from infringement of any third party's intellectual property rights or other proprietary rights, and further, assumes no liability of whatsoever nature in the event of any such infringement, or arising from or connected with or related to the use of such devices.
- Upon the sale of any such devices, other than for buyer's right to use such devices itself, resell or otherwise dispose of the same, no express or implied right or license to practice or commercially exploit any intellectual property rights or other proprietary rights owned or controlled by
- ROHM CO., LTD. is granted to any such buyer.
- Products listed in this document use silicon as a basic material.  
Products listed in this document are no antiradiation design.

The products listed in this document are designed to be used with ordinary electronic equipment or devices (such as audio visual equipment, office-automation equipment, communications devices, electrical appliances and electronic toys).

Should you intend to use these products with equipment or devices which require an extremely high level of reliability and the malfunction of which would directly endanger human life (such as medical instruments, transportation equipment, aerospace machinery, nuclear-reactor controllers, fuel controllers and other safety devices), please be sure to consult with our sales representative in advance.

#### About Export Control Order in Japan

Products described herein are the objects of controlled goods in Annex 1 (Item 16) of Export Trade Control Order in Japan.

In case of export from Japan, please confirm if it applies to "objective" criteria or an "informed" (by MITI clause) on the basis of "catch all controls for Non-Proliferation of Weapons of Mass Destruction.