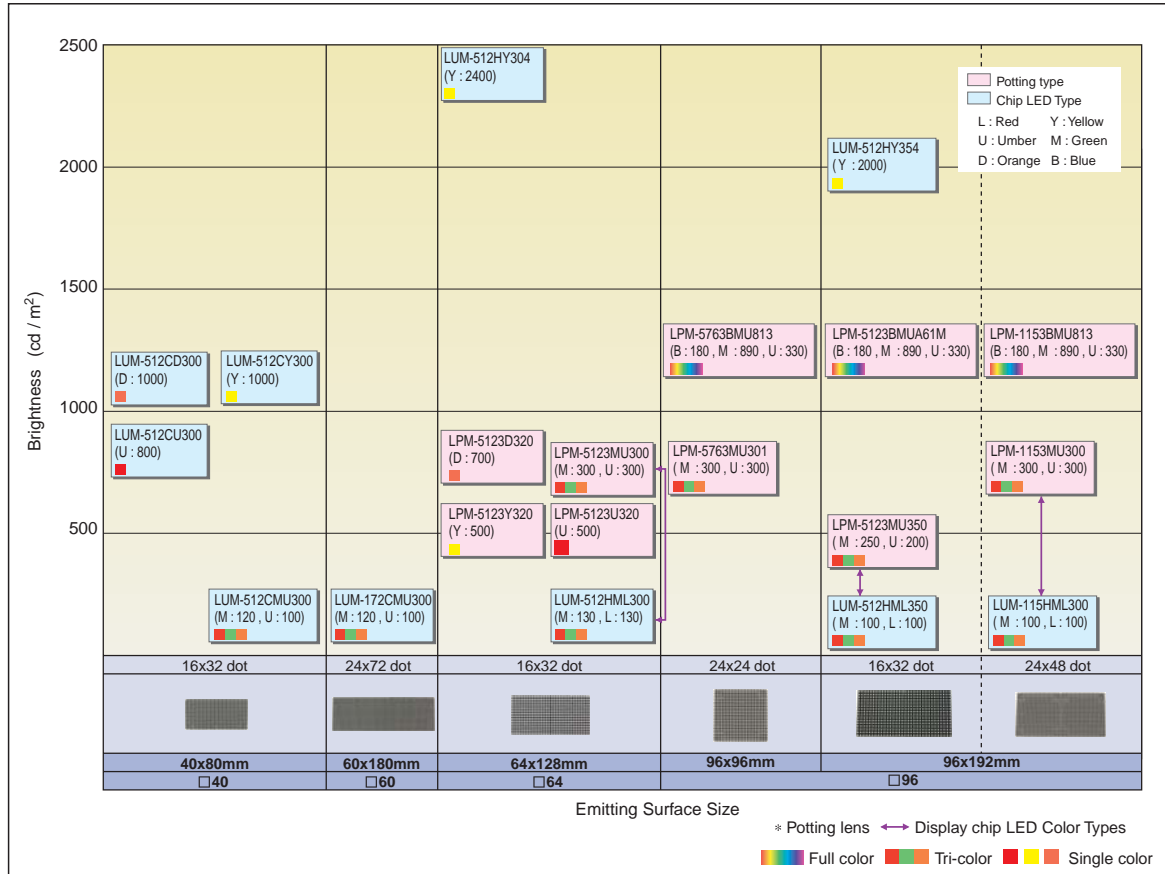


# LUM unit series

●Brightness vs. Size



LED displays

●Main specifications

Display Color	Emitting surface size (mm)	Number of dots (dot)	Part No.	Display	Emitting color	Wavelength (nm)	Dot size (mm)	Dot pitch (mm)	Control			LED		Brightness (cd/m <sup>2</sup> )	Operating freq. (MHz)	Drive type																					
									V <sub>DD</sub> (V)	I <sub>CC1</sub> Max. (mA)	V <sub>LED</sub> (V)	I <sub>CC2</sub> Max. (A)																									
Full Color	96 × 96	24 × 24	LPM-5763BMU813 <small>Potting Lens</small>	Potting lens	Red	(624)	φ2.8	4	5	400	5	3.0	330	10 (Max.)	1/24 duty (Shift register type) Internal / external gradation clock 1024 gradations																						
					Green	(525)							890																								
					Blue	(471)							180																								
	96 × 192	16 × 32	☆ LPM5123BMUA61M <small>Potting Lens</small>	Potting lens	Red	(624)	φ2.8	6	5	700	5	7.0	330	10 (Max.)	1/8 duty (Shift register type) Internal / external gradation clock 1024 gradations																						
					Green	(527)							890																								
		24 × 48	LPM-1153BMU813 <small>Potting Lens</small>	Potting lens	Red	(624)	φ2.8	4	5	600	5	6.0	330	10 (Max.)	1/24 duty (Shift register type) Internal / external gradation clock 1024 gradations																						
Green	(525)				890																																
Tri-Color	96 × 96	24 × 24	LPM-5763MU301 <small>Potting Lens</small>	Potting lens	Red	624	φ2.8	4	5	20	5	2.6	300	20 (Max.)	1/24 duty (Memory Type)																						
					Green	571							300																								
	96 × 192	16 × 32	LPM-5123MU350 <small>Potting Lens</small>	Potting lens	Red	624	φ2.8	6	5	20	5	5.2	250	20 (Max.)	1/16 duty (Memory Type)																						
					Green	571							200																								
		24 × 48	LUM-512HML350	Chip LED	Red	660	2.1×2.3	6	5	20	5	4.3	100	20 (Max.)	1/16 duty (Memory Type)																						
					Green	563							100																								
			LPM-1153MU300 <small>Potting Lens</small>	Potting lens	Red	624	φ2.8	4	5	40	5	5.2	300	20 (Max.)	1/24 duty (Memory Type)																						
					Green	571							300																								
	LUM-115HML300	Chip LED	Red	660	2.1×2.3	4	5	50	5	4.0	100	20 (Max.)	1/24 duty (Memory Type)																								
			Green	563							100																										
	64 × 128	16 × 32	LPM-5123MU300 <small>Potting Lens</small>	Potting lens	Red	624	φ2.8	4	5	30	5	3.0	300	20 (Max.)	1/16 duty (Memory Type)																						
					Green	571							300																								
	LUM-512HML300	Chip LED	Red	660	2.1×2.3	4	5	30	5	2.7	130	20 (Max.)	1/16 duty (Memory Type)																								
			Green	563							130																										
	60 × 180	24 × 72	LUM-172CMU300	Chip LED	Red	630	1.1×1.3	2.5	5	40	5	5.5	100	20 (Max.)	1/24 duty (Memory Type)																						
Green					570	120																															
40 × 80	16 × 32	LUM-512CMU300	Chip LED	Red	630	1.1×1.3	2.5	5	80	4.5	2.0	100	13 (Max.)	1/16 duty (Shift register type)																							
				Green	570							120																									
Single Color	96 × 192	16 × 32	LUM-512HY354	Chip LED	Yellow	590	1.6×2.3	6	5	60	5	4.0	2000	20	1/8 duty (Memory Type)																						
					64 × 128	16 × 32							LPM-5123D320 <small>Potting Lens</small>			Potting lens	Orange	605	φ2.8	4	5	100	5	1.6	700	10 (Max.)	1/16 duty (Shift register type)										
																	LPM-5123U320 <small>Potting Lens</small>	Potting lens							Red			624	φ2.8	4	5	100	5	1.6	500	10 (Max.)	1/16 duty (Shift register type)
																									LPM-5123Y320 <small>Potting Lens</small>			Potting lens							Yellow		
	LUM-512HY304	Chip LED	Yellow	590	1.6×2.3	4	5	30	5	2.0	2400	20	1/16 duty (Memory Type)																								
	40 × 80	16 × 32	LUM-512CD300	Milky White Chip LEDs							Orange			611	1.2×0.8	2.5	5	80	5	1.7	1000	10 (Max.)	1/16 duty (Shift register type)														
					LUM-512CU300	Milky White Chip LEDs	Red	630	1.2×0.8	2.5	5	80	5	1.7							800			10 (Max.)	1/16 duty (Shift register type)												
					LUM-512CY300	Milky White Chip LEDs	Yellow	590													1.2×0.8					2.5	5	80	5	1.7	1000	10 (Max.)	1/16 duty (Shift register type)				
122×244	16 × 32	LUM-512HY3A0	Chip LED	Yellow	590	1.6×2.3	7.62	5	(2000)	5	(6.0)	2000	10 (Max.)	Static																							

☆ : Under development

Potting Lens : Potting Lens type

### Notes

- No technical content pages of this document may be reproduced in any form or transmitted by any means without prior permission of ROHM CO.,LTD.
- The contents described herein are subject to change without notice. The specifications for the product described in this document are for reference only. Upon actual use, therefore, please request that specifications to be separately delivered.
- Application circuit diagrams and circuit constants contained herein are shown as examples of standard use and operation. Please pay careful attention to the peripheral conditions when designing circuits and deciding upon circuit constants in the set.
- Any data, including, but not limited to application circuit diagrams information, described herein are intended only as illustrations of such devices and not as the specifications for such devices. ROHM CO.,LTD. disclaims any warranty that any use of such devices shall be free from infringement of any third party's intellectual property rights or other proprietary rights, and further, assumes no liability of whatsoever nature in the event of any such infringement, or arising from or connected with or related to the use of such devices.
- Upon the sale of any such devices, other than for buyer's right to use such devices itself, resell or otherwise dispose of the same, no express or implied right or license to practice or commercially exploit any intellectual property rights or other proprietary rights owned or controlled by
- ROHM CO., LTD. is granted to any such buyer.
- Products listed in this document are no antiradiation design.

The products listed in this document are designed to be used with ordinary electronic equipment or devices (such as audio visual equipment, office-automation equipment, communications devices, electrical appliances and electronic toys).

Should you intend to use these products with equipment or devices which require an extremely high level of reliability and the malfunction of which would directly endanger human life (such as medical instruments, transportation equipment, aerospace machinery, nuclear-reactor controllers, fuel controllers and other safety devices), please be sure to consult with our sales representative in advance.

It is our top priority to supply products with the utmost quality and reliability. However, there is always a chance of failure due to unexpected factors. Therefore, please take into account the derating characteristics and allow for sufficient safety features, such as extra margin, anti-flammability, and fail-safe measures when designing in order to prevent possible accidents that may result in bodily harm or fire caused by component failure. ROHM cannot be held responsible for any damages arising from the use of the products under conditions out of the range of the specifications or due to non-compliance with the NOTES specified in this catalog.

Thank you for your accessing to ROHM product informations.

More detail product informations and catalogs are available, please contact your nearest sales office.

**ROHM** Customer Support System

THE AMERICAS / EUROPE / ASIA / JAPAN

[www.rohm.com](http://www.rohm.com)

Contact us : [webmaster@rohm.co.jp](mailto:webmaster@rohm.co.jp)