

Serial-in / Parallel-out Driver Series

Serial / Parallel 5-input Driver



BA829

●Description

Serial-in-parallel-out driver is a constant-current output driver with a built-in shift register and a latch circuit to turn on a maximum of 8 LED by a 5-line interface linked to a microcontroller. Output current value of constant-current can be set up to a maximum of 300mA.

●Features

- 1) This product can drive a maximum of 300mA.
- 2) When the strobe terminal is controlled by the drive timing pulse, current during a period without driving can be reduced.
- 3) When the data output terminal is used as the next input data, cascade connection becomes possible.
- 4) Digital ground and power ground are separated.
- 5) Latch is built in between the shift register and the driver output.
- 6) Stand-by function is incorporated. (10 μ A Typ. upon standby)

●Applications

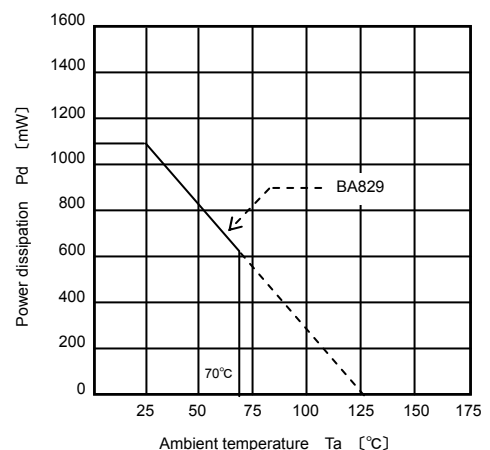
For AV equipment such as, component stereo sets, videos and TV sets, PCs, and control microcontroller mounted equipment.

●Absolute maximum ratings

Parameter	Symbol	Limit	Unit
Power supply voltage	V_{DD}	-0.3 to +7.0	V
Power dissipation	P_d	1100*	mW
Input voltage	I_{SINK}	-0.3 to V_{CC}	V
Output voltage	V_o	15	V
Operating temperature	T_{opr}	-25 to +70	$^{\circ}C$
Storage temperature	T_{stg}	-55 to +125	$^{\circ}C$

*1 Reduced by 11 mW/ $^{\circ}C$ over 25 $^{\circ}C$.

●Thermal derating curve



● Recommended operating conditions (Topr=-25°C to +70°C)

Parameter	Symbol	Min.	Typ.	Max.	Unit	Condition
Power supply	V _{CC}	4.5	5.0	5.5	V	-
Clock frequency	T _{CLK}	-	-	500	kHz	-
Power setup time	t _{Pset}	500	-	-	ns	Fig.4
Clock pulse width	t _{WC}	1	-	-	ns	Fig.4
Data setup time	t _{Dset}	300	-	-	ns	Fig.4
Data hold time	t _{Dhold}	400	-	-	ns	Fig.4
Latch pulse timing 1	t _{LT1}	600	-	-	ns	Fig.4
Latch pulse timing 2	t _{LT2}	250	-	-	ns	Fig.4
Latch pulse width	t _{WL}	800	-	-	ns	Fig.4
Strobe pulse timing 1	t _{ST1}	300	-	-	ns	Fig.4
Strobe pulse width	t _{ws}	3	-	-	μs	Fig.4
Voltage between L-GND and P-GND	V _G	-	-	0.2	V	-

* Electric potential is a difference of L-GND and P-GND. Short-circuit near the power source whenever possible. However, between L-GND Pin and P-GND Pin, product should be used in a range not exceeding 0.2V.

● Electrical characteristics (Unless otherwise specified, Ta=25°C, V_{CC}=5.0V)

Parameter	Symbol	Min.	Typ.	Max.	Unit	Condition	Test Circuit
Supply current 1	I _{CC1}	—	10	20	μA	PSW “L”	Fig.1
Supply current 2	I _{CC2}	—	110	158	mA	PSW “H” , STB “H”	Fig.1
Supply current 3	I _{CC3}	—	14	20	mA	PSW “H” , STB “L”	Fig.1
Output ON voltage	V _{OON}	—	0.4	0.6	V	I _{CCN} =300 mA	Fig.1
Output leakage current	I _{OOFF}	—	10	50	μA	V ₀ =13.5V	Fig.1
Data transference time	f _{CLK}	500	—	—	kHz	—	Fig.1
Input high-level voltage	V _{IH}	2.6	—	—	V	—	Fig.2
Input low-level voltage	V _{IL}	—	—	0.8	V	—	Fig.2
Input high-level current	I _{IH1}	—	0.1	10	μA	V ₁ =3.4V,CLK,LATCH, DATA,STB	Fig.1
Input low-level current	I _{IL1}	—	-0.01	-0.1	mA	V ₁ =0.4V,CLK,LATCH, DATA,STB	Fig.1
Out put high-level voltage	V _{DDH}	2.8	3.0	—	V	I _{DOH} =-400 μA	Fig.1
Output low-level voltage	V _{DDL}	—	0.3	0.4	V	I _{DOL} =Δ 1.6mA	Fig.1
Data output transmission delay	t _{DLH}	—	0.6	1.0	μs	R _{LD} =10kΩ	Fig.4
Data output transmission delay	t _{DHL}	—	0.6	2.0	μs	R _{LD} =10kΩ	Fig.4
Print output transmission delay	t _{OLH}	—	—	10	μs	R _L =560kΩ 560, V ₀ =13.5V	Fig.4
Print output transmission delay	t _{OHL}	—	—	10	μs	R _L =560kΩ 560, V ₀ =13.5V	Fig.4
Input high-level current	I _{IH2}	—	0.04	0.1	mA	V ₁ =3.4V,PSW	Fig.1
Input low-level current	I _{IL2}	—	0.1	10	μA	V ₁ =0.4V,PSW	Fig.1

●Block diagram

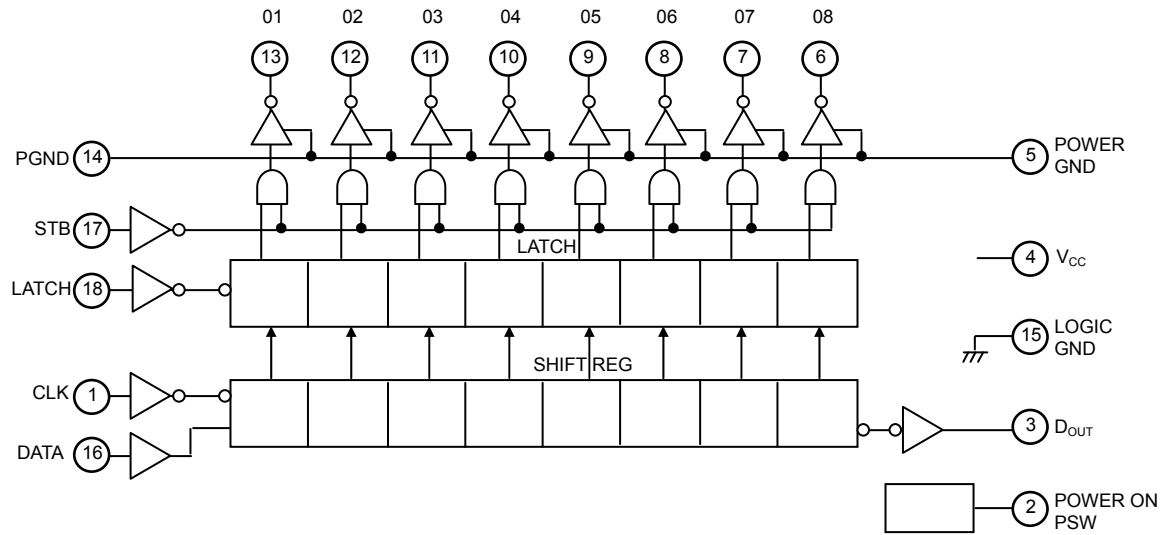


Fig. 3

●Pin descriptions

PIN No.	Terminal	I/O	Function
1	CLK	I	Clock input
2	PSW	I	Power switch
3	D _{OUT}	O	Cascade output
4	V _{CC}	-	Power supply
5	PGND	-	GND
6	O8	O	Parallel data output
7	O7	O	
8	O6	O	
9	O5	O	
10	O4	O	
11	O3	O	
12	O2	O	
13	O1	O	
14	PGND	-	GND
15	LGND	-	GND
16	DATA	I	Serial data input
17	STB	I	Strobe input , "L" active
18	LATCH	I	Latch input

● **Description of operation**

BA829 is configured internally as shown in the logic circuit diagram. Terminals of clock (CLK), data (DATA), latch (LATCH), strobe (STB), and power switch (PSW) are available as input.

Data input is synchronized with the clock, read serially during the rise time and latched at the rise time edge of the shifted shift register. Latched data appears on the output terminal of O1-O8 by the strobe input. Pulse width is the same as that of the strobe input. Data output terminal D_{OUT}, is a terminal used for cascade connection of the IC, where the output of the final stage of the shift register has appeared, and is connected to the next data input terminal DATA. In this case, when the clock and the strobe are used in conjunction, output terminal can be increased by 8 bits at a time.

To affect the standby mode, set the power switch to "L".

● **Timing chart**

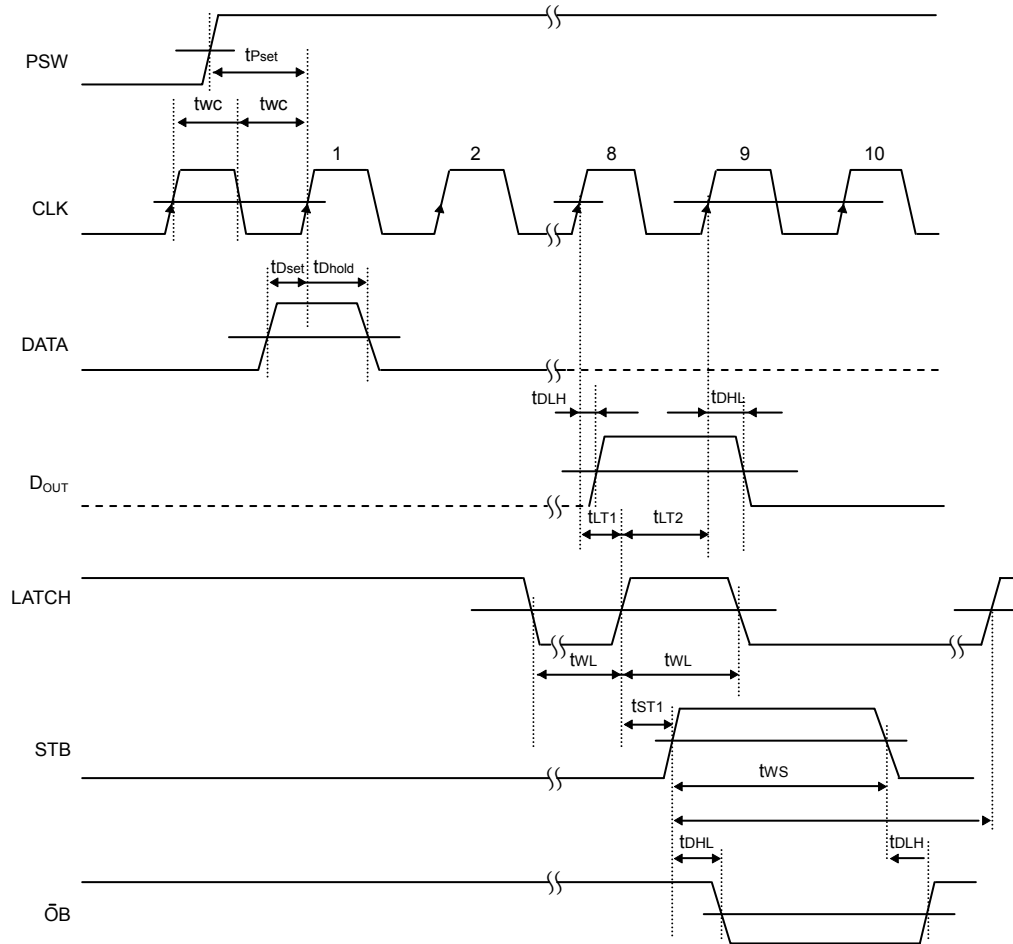
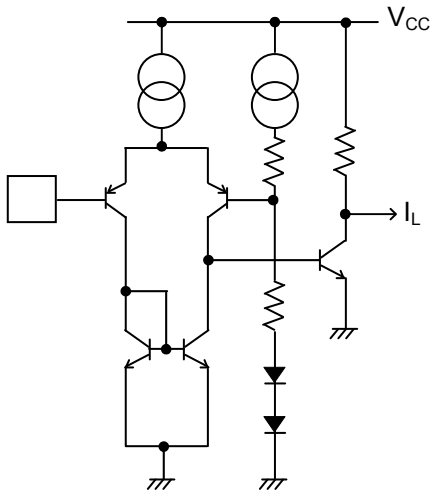
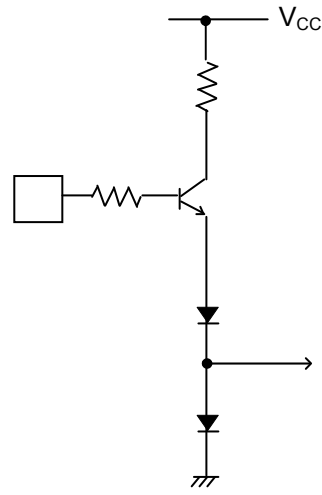


Fig. 4

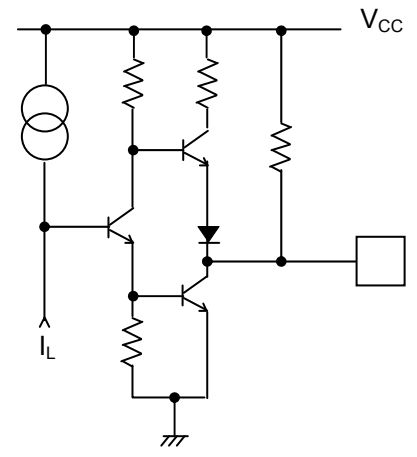
● Interfaces



(a) INPUT (CLK , DATA , LATCH , STB)



(b) INPUT (PSW)



(c) OUTPUT (D_{OUT})

● Operation Notes

1. Absolute maximum ratings

An excess in the absolute maximum ratings, such as supply voltage, temperature range of operating conditions, etc., can break down the devices, thus making impossible to identify breaking mode, such as a short circuit or an open circuit. If any over rated values will expect to exceed the absolute maximum ratings, consider adding circuit protection devices, such as fuses.

2. Connecting the power supply connector backward

Connecting of the power supply in reverse polarity can damage IC. Take precautions when connecting the power supply lines. An external direction diode can be added.

3. Power supply lines

Design PCB layout pattern to provide low impedance GND and supply lines. To obtain a low noise ground and supply line, separate the ground section and supply lines of the digital and analog blocks. Furthermore, for all power supply terminals to ICs, connect a capacitor between the power supply and the GND terminal. When applying electrolytic capacitors in the circuit, note that capacitance characteristic values are reduced at low temperatures.

4. GND voltage

The potential of GND pin must be minimum potential in all operating conditions.

5. Inter-pin shorts and mounting errors

Use caution when positioning the IC for mounting on printed circuit boards. The IC may be damaged if there is any connection error or if pins are shorted together.

6. Actions in strong electromagnetic field

Use caution when using the IC in the presence of a strong electromagnetic field as doing so may cause the IC to malfunction.

7. Testing on application boards

When testing the IC on an application board, connecting a capacitor to a pin with low impedance subjects the IC to stress. Always discharge capacitors after each process or step. Always turn the IC's power supply off before connecting it to or removing it from a jig or fixture during the inspection process. Ground the IC during assembly steps as an antistatic measure. Use similar precaution when transporting or storing the IC.

8. Regarding input pin of the IC

This monolithic IC contains P+ isolation and P substrate layers between adjacent elements in order to keep them isolated.

P-N junctions are formed at the intersection of these P layers with the N layers of other elements, creating a parasitic diode or transistor. For example, the relation between each potential is as follows:

When $GND > Pin A$ and $GND > Pin B$, the P-N junction operates as a parasitic diode.

When $GND > Pin B$, the P-N junction operates as a parasitic transistor.

Parasitic diodes can occur inevitable in the structure of the IC. The operation of parasitic diodes can result in mutual interference among circuits, operational faults, or physical damage. Accordingly, methods by which parasitic diodes operate, such as applying a voltage that is lower than the GND (P substrate) voltage to an input pin, should not be used.

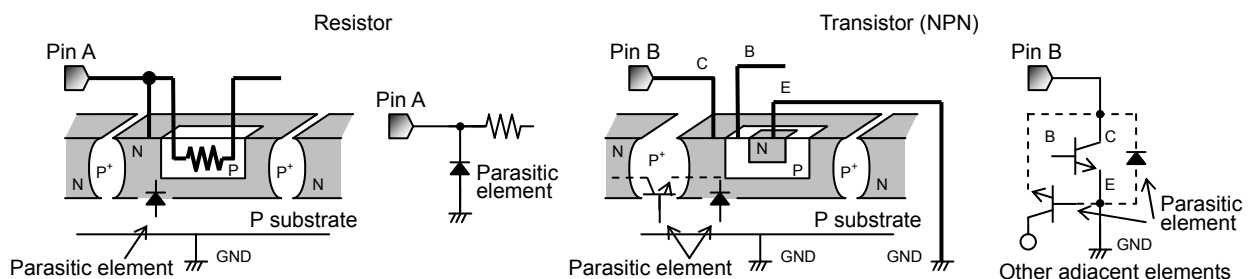
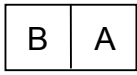


Fig.5 Example of IC structure

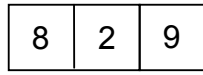
9. Ground Wiring Pattern

When using both small signal and large current GND patterns, it is recommended to isolate the two ground patterns, placing a single ground point at the ground potential of application so that the pattern wiring resistance and voltage variations caused by large currents do not cause variations in the small signal ground voltage. Be careful not to change the GND wiring pattern of any external components, either.

● Ordering part number

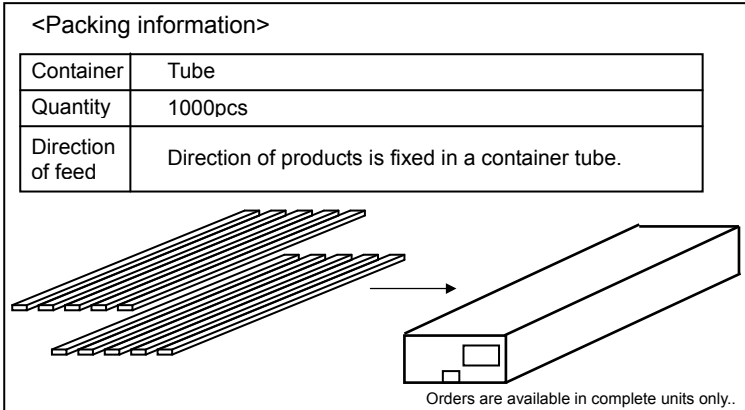
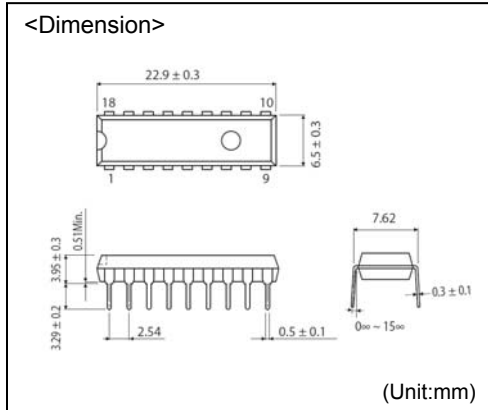


ROHM ordering number



Type

DIP18



- The contents described herein are correct as of October, 2008
- The contents described herein are subject to change without notice. For updates of the latest information, please contact and confirm with ROHM CO.,LTD.
- Any part of this application note must not be duplicated or copied without our permission.
- Application circuit diagrams and circuit constants contained herein are shown as examples of standard use and operation. Please pay careful attention to the peripheral conditions when designing circuits and deciding upon circuit constants in the set.
- Any data, including, but not limited to application circuit diagrams and information, described herein are intended only as illustrations of such devices and not as the specifications for such devices. ROHM CO.,LTD. disclaims any warranty that any use of such devices shall be free from infringement of any third party's intellectual property rights or other proprietary rights, and further, assumes no liability of whatsoever nature in the event of any such infringement, or arising from or connected with or related to the use of such devices.
- Upon the sale of any such devices, other than for buyer's right to use such devices itself, resell or otherwise dispose of the same, implied right or license to practice or commercially exploit any intellectual property rights or other proprietary rights owned or controlled by ROHM CO., LTD. is granted to any such buyer.
- The products described herein utilize silicon as the main material.
- The products described herein are not designed to be X ray proof.

The products listed in this catalog are designed to be used with ordinary electronic equipment or devices (such as audio visual equipment, office-automation equipment, communications devices, electrical appliances and electronic toys). Should you intend to use these products with equipment or devices which require an extremely high level of reliability and the malfunction of which would directly endanger human life (such as medical instruments, transportation equipment, aerospace machinery, nuclear-reactor controllers, fuel controllers and other safety devices), please be sure to consult with our sales representative in advance.

Contact us for further information about the products.

San Diego	TEL: +1-858-625-3630	FAX: +1-858-625-3670	Tianjin	TEL: +86-22-23029181	FAX: +86-22-23029183
Atlanta	TEL: +1-770-754-5972	FAX: +1-770-754-0691	Shanghai	TEL: +86-21-6279-2727	FAX: +86-21-6247-2066
Boston	TEL: +1-978-371-0382	FAX: +1-928-438-7164	Hangzhou	TEL: +86-571-87658072	FAX: +86-571-87658071
Chicago	TEL: +1-847-368-1006	FAX: +1-847-368-1008	Nanjing	TEL: +86-25-8689-0015	FAX: +86-25-8689-0393
Dallas	TEL: +1-469-287-5366	FAX: +1-469-362-7973	Ningbo	TEL: +86-574-87654201	FAX: +86-574-87654208
Denver	TEL: +1-303-708-0908	FAX: +1-303-708-0858	Qingdao	TEL: +86-532-5779-312	FAX: +86-532-5779-653
Detroit	TEL: +1-248-348-9920	FAX: +1-248-348-9942	Suzhou	TEL: +86-510-82702693	FAX: +86-510-82702992
Nashville	TEL: +1-615-620-6700	FAX: +1-615-620-6702	Wuxi	TEL: +86-510-82702693	FAX: +86-510-82702992
Mexico	TEL: +52-33-3123-2001	FAX: +52-33-3123-2002	Shenzhen	TEL: +86-755-8307-3008	FAX: +86-755-8307-3003
Düsseldorf	TEL: +49-2154-9210	FAX: +49-2154-921400	Dongguan	TEL: +86-769-8393-3320	FAX: +86-769-8398-4140
Munich	TEL: +49-8999-216168	FAX: +49-8999-216176	Fuzhou	TEL: +86-591-8801-8698	FAX: +86-591-8801-8690
Stuttgart	TEL: +49-711-7272-370	FAX: +49-711-7272-3720	Guangzhou	TEL: +86-20-3878-8100	FAX: +86-20-3825-5965
France	TEL: +33-1-5697-3060	FAX: +33-1-5697-3080	Huizhou	TEL: +86-752-205-1054	FAX: +86-752-205-1059
United Kingdom	TEL: +44-1-908-306700	FAX: +44-1-908-235788	Xiamen	TEL: +86-592-238-5705	FAX: +86-592-239-8380
Denmark	TEL: +45-3694-4739	FAX: +45-3694-4789	Zhuhai	TEL: +86-756-3232-480	FAX: +86-756-3232-460
Espoo	TEL: +358-9725-54491	FAX: +358-9-7255-4499	Hong Kong	TEL: +852-2-740-6262	FAX: +852-2-375-8971
Salò	TEL: +358-2-7332234	FAX: +358-2-7332237	Taipei	TEL: +886-2-2500-6956	FAX: +886-2-2503-2869
Oulu	TEL: +358-8-5372930	FAX: +358-8-5372931	Kaohsiung	TEL: +886-7-237-0881	FAX: +886-7-238-7332
Barcelona	TEL: +34-9375-24320	FAX: +34-9375-24410	Singapore	TEL: +65-6332-2322	FAX: +65-6332-5662
Hungary	TEL: +36-1-4719338	FAX: +36-1-4719339	Philippines	TEL: +63-2-807-6872	FAX: +63-2-809-1422
Poland	TEL: +48-22-5757213	FAX: +48-22-5757001	Thailand	TEL: +66-2-254-4890	FAX: +66-2-256-6334
Russia	TEL: +7-495-739-41-74	FAX: +7-495-739-41-74	Kuala Lumpur	TEL: +60-3-7958-8355	FAX: +60-3-7958-8377
Seoul	TEL: +82-2-8182-700	FAX: +82-2-8182-715	Penang	TEL: +60-4-2286453	FAX: +60-4-2286452
Masan	TEL: +82-55-240-6234	FAX: +82-55-240-6236	Kyoto	TEL: +81-75-365-1218	FAX: +81-75-365-1228
Dalian	TEL: +86-411-8230-8549	FAX: +86-411-8230-8537	Yokohama	TEL: +81-45-476-2290	FAX: +81-45-476-2295
Beijing	TEL: +86-10-8525-2483	FAX: +86-10-8525-2489			

Excellence in Electronics



ROHM CO., LTD.

21 Saiin Mizosaki-cho, Ukyo-ku, Kyoto
615-8585, Japan
TEL: +81-75-311-2121 FAX: +81-75-315-0172
URL: <http://www.rohm.com>

Published by
KTC LSI Development Headquarters
LSI Business Promotion Group

Notes

No copying or reproduction of this document, in part or in whole, is permitted without the consent of ROHM CO.,LTD.

The content specified herein is subject to change for improvement without notice.

The content specified herein is for the purpose of introducing ROHM's products (hereinafter "Products"). If you wish to use any such Product, please be sure to refer to the specifications, which can be obtained from ROHM upon request.

Examples of application circuits, circuit constants and any other information contained herein illustrate the standard usage and operations of the Products. The peripheral conditions must be taken into account when designing circuits for mass production.

Great care was taken in ensuring the accuracy of the information specified in this document. However, should you incur any damage arising from any inaccuracy or misprint of such information, ROHM shall bear no responsibility for such damage.

The technical information specified herein is intended only to show the typical functions of and examples of application circuits for the Products. ROHM does not grant you, explicitly or implicitly, any license to use or exercise intellectual property or other rights held by ROHM and other parties. ROHM shall bear no responsibility whatsoever for any dispute arising from the use of such technical information.

The Products specified in this document are intended to be used with general-use electronic equipment or devices (such as audio visual equipment, office-automation equipment, communication devices, electronic appliances and amusement devices).

The Products are not designed to be radiation tolerant.

While ROHM always makes efforts to enhance the quality and reliability of its Products, a Product may fail or malfunction for a variety of reasons.

Please be sure to implement in your equipment using the Products safety measures to guard against the possibility of physical injury, fire or any other damage caused in the event of the failure of any Product, such as derating, redundancy, fire control and fail-safe designs. ROHM shall bear no responsibility whatsoever for your use of any Product outside of the prescribed scope or not in accordance with the instruction manual.

The Products are not designed or manufactured to be used with any equipment, device or system which requires an extremely high level of reliability the failure or malfunction of which may result in a direct threat to human life or create a risk of human injury (such as a medical instrument, transportation equipment, aerospace machinery, nuclear-reactor controller, fuel-controller or other safety device). ROHM shall bear no responsibility in any way for use of any of the Products for the above special purposes. If a Product is intended to be used for any such special purpose, please contact a ROHM sales representative before purchasing.

If you intend to export or ship overseas any Product or technology specified herein that may be controlled under the Foreign Exchange and the Foreign Trade Law, you will be required to obtain a license or permit under the Law.

Thank you for your accessing to ROHM product informations.

More detail product informations and catalogs are available, please contact your nearest sales office.

ROHM Customer Support System

THE AMERICAS / EUROPE / ASIA / JAPAN

www.rohm.com

Contact us : webmaster@rohm.co.jp